

Tuesday, 21 June 2022

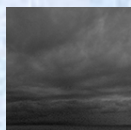
PALMER STATION WEATHER FORECAST INFORMATION

**THIS INFORMATION IS FOR OFFICIAL USE ONLY
AND IS LIMITED TO ACTIVITIES SPONSORED OR RECOGNIZED
BY THE UNITED STATES ANTARCTIC PROGRAM**

REGIONAL WEATHER SUMMARY

Winds and snowfall decrease as the low departs. A ridge extending from the South Pacific across the Southern Ocean to the Antarctic Peninsula becomes the dominant weather feature; that typically means fair weather, but occasional snow showers are likely in the Anvers Island area throughout this period.

Today
21 June



Tonight



Tomorrow
22 June



Sky: Cloudy

Visibility (SM): Unrestricted,
occasional snow

Wind (kts): SW 15-20
occasional gust 30 becoming
variable 8-12

Max Temp: -4°C / 25°F

Min Wind Chill: -14°C / 7°F

Sky: Cloudy

Visibility (SM): Unrestricted
occasionally 1-3 in snow

Wind (kts): SW 15-20

Min Temp: -6°C / 21°F

Min Wind Chill: -16°C / 3°F

Sky: Mostly Cloudy
occasionally Partly Cloudy

Visibility (SM): Unrestricted,
occasional snow

Wind (kts): SW 10-15

Max Temp: -4°C / 25°F

Min Wind Chill: -13°C / 9°F

ASTRONOMICAL DATA

Date	Sunrise	Sunset
21 June	11:26 a.m.	3:09 p.m.
22 June	11:26 a.m.	3:10 p.m.

Forecaster: *Bob Michael*