

Monday, 27 June 2022

**PALMER STATION WEATHER FORECAST INFORMATION**

**THIS INFORMATION IS FOR OFFICIAL USE ONLY  
AND IS LIMITED TO ACTIVITIES SPONSORED OR RECOGNIZED  
BY THE UNITED STATES ANTARCTIC PROGRAM**

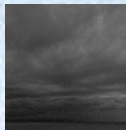
**REGIONAL WEATHER SUMMARY**

Still an unchanged weather pattern: a series of troughs and low centers spinning around a major low in the Bellingshausen Sea. But the winds will intensify gradually throughout this period as the pressure gradient tightens off shore to the west. Should get a break from snow later today that lasts overnight tonight through the morning hours, but it will be back tomorrow afternoon.

**Today**  
27 June



**Tonight**



**Tomorrow**  
28 June



**Sky:** Cloudy

**Visibility (SM):** Unrestricted,  
occasionally 3-5 in snow

**Wind (kts):** Light & variable  
becoming N-NE 20-30 gust 35

**Max Temp:** -1°C / 31°F

**Min Wind Chill:** -12°C / 10°F

**Sky:** Cloudy

**Visibility (SM):** Unrestricted

**Wind (kts):** N-NE 20-30 gust  
40

**Min Temp:** -3°C / 27°F

**Min Wind Chill:** -13°C / 9°F

**Sky:** Cloudy

**Visibility (SM):** Unrestricted,  
becoming 1-3 in snow

**Wind (kts):** N-NE 20-30 gust  
40 occasionally gust 50

**Max Temp:** -1°C / 31°F

**Min Wind Chill:** -12°C / 10°F

**ASTRONOMICAL DATA**

Date	Sunrise	Sunset
27 June	11:24 a.m.	3:14 p.m.
28 June	11:23 a.m.	3:15 p.m.

**Forecaster:** *Bob Michael*