

Monday, 7 November 2022

PALMER STATION WEATHER FORECAST INFORMATION

**THIS INFORMATION IS FOR OFFICIAL USE ONLY
AND IS LIMITED TO ACTIVITIES SPONSORED OR RECOGNIZED
BY THE UNITED STATES ANTARCTIC PROGRAM**

REGIONAL WEATHER SUMMARY

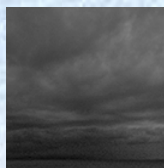
Easing and improved conditions today through tonight until the next wave and frontal boundary crash the Peninsula first thing tomorrow with high wind followed by snow and fog...

Today

7 November

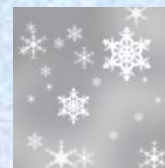


Tonight



Tomorrow

8 November



Sky: Cloudy

Visibility (SM): 2-4 fog, snow, occasionally Unrestricted

Wind (kts): NW 20-30, becoming NW 12-22

Max Temp: 1°C / 34°F

Min Wind Chill: -10°C / 14°F

Sky: Cloudy

Visibility (SM): Unrestricted

Wind (kts): NW-NE 12-22, becoming E-SE 8-18

Min Temp: -2°C / 28°F

Min Wind Chill: -9°C / 16°F

Sky: Cloudy

Visibility (SM): Unrestricted, becoming 1/2-2 fog, snow

Wind (kts): E-SE 20-35, becoming SW-NW 12-22

Max Temp: 2°C / 36°F

Min Wind Chill: -6°C / 21°F

ASTRONOMICAL DATA

Date	Sunrise	Sunset
7 November	4:15 a.m.	9:46 p.m.
8 November	4:12 a.m.	9:50 p.m.

Forecaster: *Al Hay*