

Friday, 11 November 2022
PALMER STATION WEATHER FORECAST INFORMATION

**THIS INFORMATION IS FOR OFFICIAL USE ONLY
 AND IS LIMITED TO ACTIVITIES SPONSORED OR RECOGNIZED
 BY THE UNITED STATES ANTARCTIC PROGRAM**

REGIONAL WEATHER SUMMARY

Frontal boundary off low pressure in the southern Bellingshausen Sea moves east across the area this morning with a quick blast of wind and snow. Expect a steady west-northwest breeze by evening with lowered visibility in light snow and fog. Improving conditions tomorrow in advance of the next wave tentatively scheduled to arrive overnight...And to all my fellow veteran's, thank you for your service!

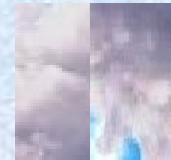
Today
11 November



Tonight



Tomorrow
12 November



Sky: Cloudy

Visibility (SM): Unrestricted, occasional 3-5 snow, becoming 1-3 snow, fog

Wind (kts): NW-N 10-20, becoming NE 25-40, becoming W-NW 20-30

Max Temp: 0°C / 32°F

Min Wind Chill: -10°C / 14°F

Sky: Cloudy

Visibility (SM): 1-3 snow, fog

Wind (kts): W-NW 15-25

Min Temp: -1°C / 30°F

Min Wind Chill: -9°C / 16°F

Sky: Cloudy, occasional Mostly Cloudy

Visibility (SM): 1-3 fog, becoming Unrestricted; chance of snow overnight

Wind (kts): NW 12-22; N-NE 20-30 overnight

Max Temp: 1°C / 34°F

Min Wind Chill: -8°C / 18°F

ASTRONOMICAL DATA

Date	Sunrise	Sunset
11 November	4:01 a.m.	10:01 p.m.
12 November	3:58 a.m.	10:05 p.m.

Forecaster: *Al Hay*