

Sunday, 13 November 2022
PALMER STATION WEATHER FORECAST INFORMATION

**THIS INFORMATION IS FOR OFFICIAL USE ONLY
 AND IS LIMITED TO ACTIVITIES SPONSORED OR RECOGNIZED
 BY THE UNITED STATES ANTARCTIC PROGRAM**

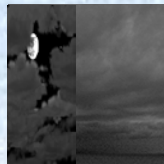
REGIONAL WEATHER SUMMARY

A cold front will move through the Antarctic Peninsula this morning, preceded by snow and gusty north winds early. Snow will end as the winds slacken and shift to the northwest, followed by cooling temperatures. Temperatures will warm later tonight as winds become northerly and increase ahead of the next cyclone moving southeastward into the Bellingshausen Sea. Snow will return Monday afternoon.

Today
13 November



Tonight



Tomorrow
14 November



Sky: Cloudy, becoming partly cloudy this afternoon

Visibility (SM): 3-5 in snow, occasional 1 or less; becoming unrestricted this afternoon

Wind (kts): N 25-35 gusts to 40, becoming NW 13-19 this afternoon

Max Temp: 0°C / 32°F, turning colder this afternoon

Min Wind Chill: -11°C / 12°F

Sky: Increasing clouds

Visibility (SM): Unrestricted

Wind (kts): NW-N 10-15, becoming N 20-30 late

Min Temp: -2°C / 28°F, turning warmer late

Min Wind Chill: -10°C / 14°F

Sky: Cloudy

Visibility (SM): Unrestricted, becoming 3-5 with occasional 1 or less in snow in the afternoon

Wind (kts): N 25-30 gusts to 40

Max Temp: 1°C / 34°F

Min Wind Chill: -9°C / 17°F

ASTRONOMICAL DATA

Date	Sunrise	Sunset
13 November	3:54 a.m.	10:08 p.m.
14 November	3:51 a.m.	10:12 p.m.

Forecaster: *Jeff Fournier*