

Thursday, 6 October 2022

PALMER STATION WEATHER FORECAST INFORMATION

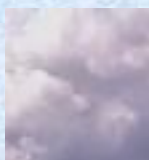
**THIS INFORMATION IS FOR OFFICIAL USE ONLY
AND IS LIMITED TO ACTIVITIES SPONSORED OR RECOGNIZED
BY THE UNITED STATES ANTARCTIC PROGRAM**

REGIONAL WEATHER SUMMARY

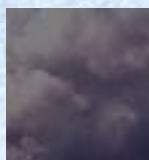
Breezy with a little blue sky will turn sour late afternoon, evening as a fast moving frontal boundary crashes the Peninsula bringing clouds, precipitation, and higher wind. Conditions ease overnight and settle into a moist, breezy northwesterly flow as broad low pressure drops into the southern Bellingshausen Sea...

Today

6 October

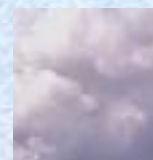


Tonight



Tomorrow

7 October



Sky: Mostly Cloudy becoming Cloudy

Visibility (SM): Unrestricted, occasional 3-5 light snow late afternoon

Wind (kts): NE-E 15-30, becoming E-SE 25-45

Max Temp: 1°C / 34°F

Min Wind Chill: -9°C / 16°F

Sky: Cloudy becoming Mostly Cloudy

Visibility (SM): Unrestricted, occasional 2-4 light snow early evening

Wind (kts): E-SE 25-45, becoming W-NW 7-15

Min Temp: -2°C / 28°F

Min Wind Chill: -10°C / 14°F

Sky: Cloudy

Visibility (SM): Unrestricted, becoming occasional 3-5 light snow, fog

Wind (kts): NW 12-25

Max Temp: 0°C / 32°F

Min Wind Chill: -9°C / 16°F

ASTRONOMICAL DATA

Date	Sunrise	Sunset
6 October	6:12 a.m.	7:58 p.m.
7 October	6:08 a.m.	8:01 p.m.

Forecaster: *Al Hay*