

Thursday, 20 April 2023

**PALMER STATION WEATHER FORECAST INFORMATION**

**THIS INFORMATION IS FOR OFFICIAL USE ONLY  
AND IS LIMITED TO ACTIVITIES SPONSORED OR RECOGNIZED  
BY THE UNITED STATES ANTARCTIC PROGRAM**

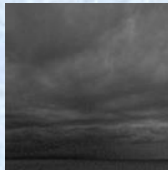
**REGIONAL WEATHER SUMMARY**

A low pressure system in the Bellingshausen Sea weakens as it interacts with the Antarctic Peninsula terrain and redevelops in the Weddell Sea tomorrow as a high pressure ridge approaches Anvers Island. Indications are for strong northwest winds weakening and precipitation decreasing through today and into tonight. For tomorrow expect light northeast winds with light precipitation under higher pressure.

**Today**  
20 April



**Tonight**



**Tomorrow**  
21 April



**Sky:** Cloudy

**Visibility (SM):** 3-5, with periods of 1/2-2 in snow, blowing snow, freezing fog/mist

**Wind (kts):** NW-N 15-25 gusts to 30, becoming NW 10-20

**Max Temp:** -2°C / 28°F

**Min Wind Chill:** -11 / 12°F

**Sky:** Cloudy, occasional Mostly Cloudy

**Visibility (SM):** Unrestricted with periods of 4-6 in snow, blowing snow, freezing fog/mist

**Wind (kts):** N-NE 10-20 gusts to 25

**Min Temp:** -2°C / 28°F

**Min Wind Chill:** -9C / 16°F

**Sky:** Cloudy

**Visibility (SM):** 4-6, with periods of 1-2 in snow, freezing fog/mist

**Wind (kts):** N-NE 10-15, becoming

**Max Temp:** -1°C / 30°F

**Min Wind Chill:** -7°C / 19°F

**ASTRONOMICAL DATA**

Date	Sunrise	Sunset
20 April	8:49 a.m.	5:40 p.m.
21 April	8:52 a.m.	5:36 p.m.

**Forecaster:** *Mark Millen*