

Sunday, 27 August, 2023

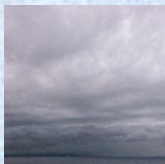
**PALMER STATION WEATHER FORECAST INFORMATION**

**THIS INFORMATION IS FOR OFFICIAL USE ONLY  
AND IS LIMITED TO ACTIVITIES SPONSORED OR RECOGNIZED  
BY THE UNITED STATES ANTARCTIC PROGRAM**

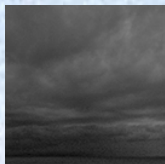
**REGIONAL WEATHER SUMMARY**

A minor low pressure system is moving towards Anvers Island, but is quickly dissipating as it approaches. This will sustain cloudy skies and light winds through the forecast period, with only the occasional light snow or mist to reduce visibility at times.

**Today**  
27 August



**Tonight**



**Tomorrow**  
28 August



**Sky:** Mostly Cloudy to Cloudy

**Visibility (SM):** Unrestricted, occasionally 4 – 6 due to light snow and mist

**Wind (kts):** NE 5 – 10

**Max Temp:** -4°C / 25°F

**Min Wind Chill:** -10°C / 14°F

**Sky:** Mostly Cloudy to Cloudy

**Visibility (SM):** Unrestricted, occasionally 4 – 6 due to light snow and mist

**Wind (kts):** NE 5 – 10

**Min Temp:** -4°C / 25°F

**Min Wind Chill:** -10°C / 14°F

**Sky:** Mostly Cloudy to Cloudy

**Visibility (SM):** Unrestricted, occasionally 2 – 4 due to light snow and mist

**Wind (kts):** NE 5 – 10

**Max Temp:** -3°C / 27°F

**Min Wind Chill:** -10°C / 14°F

**ASTRONOMICAL DATA**

| Date      | Sunrise   | Sunset    |
|-----------|-----------|-----------|
| 27 August | 8:37 a.m. | 5:58 p.m. |
| 28 August | 8:34 a.m. | 6:01 p.m. |

**Forecaster:** *John Meyer*