

Tuesday, 12 December 2023
PALMER STATION WEATHER FORECAST INFORMATION

**THIS INFORMATION IS FOR OFFICIAL USE ONLY
 AND IS LIMITED TO ACTIVITIES SPONSORED OR RECOGNIZED
 BY THE UNITED STATES ANTARCTIC PROGRAM**

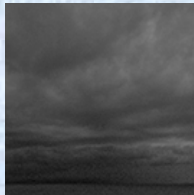
REGIONAL WEATHER SUMMARY

A weak low continues to impact Anvers Island over the next 24 hours as it lingers in open waters. The quasi-stationary low will continue to weaken, causing winds and mixed precipitation to taper in the afternoon. Thursday morning will welcome cloud breaks and fair weather.

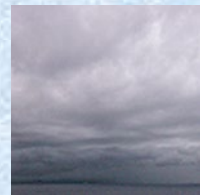
Today
12 December



Tonight



Tomorrow
13 December



Sky: Cloudy

Visibility (SM):): 4-6 due to patchy fog and light rain/snow mix; occasionally 2-4 due to light fog and rain/snow mix

Wind (kts): NE-E 12-20

Max Temp: 2°C / 36°F

Min Wind Chill: -5°C / 23°F

Sky: Cloudy

Visibility (SM): Unrestricted; occasionally 5-7 in light rain/snow mix early evening

Wind (kts): VRB 5-10

Min Temp: 0°C / 32°F

Min Wind Chill: -5°C / 23°F

Sky: Cloudy becoming Partly Cloudy overnight

Visibility (SM): Unrestricted; occasionally 5-7 in light rain/snow mix midday

Wind (kts): NE 12-18

Max Temp: 1°C / 34°F

Min Wind Chill: -6°C / 22°F

ASTRONOMICAL DATA

Date	Sunrise	Sunset
12 December	2:29 a.m.	11:52 p.m.
13 December	2:27 a.m.	11:55 p.m.

Forecaster: *Regis Sullivan*