

Wednesday, 20 December 2023

PALMER STATION WEATHER FORECAST INFORMATION

**THIS INFORMATION IS FOR OFFICIAL USE ONLY
AND IS LIMITED TO ACTIVITIES SPONSORED OR RECOGNIZED
BY THE UNITED STATES ANTARCTIC PROGRAM**

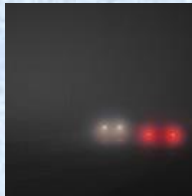
REGIONAL WEATHER SUMMARY

Palmer remains in neutral flow between low pressure centers, but satellite imagery shows a persistent stratus layer will move through the station which may contain flurries. High pressure overnight will allow fog to form, which will clear out early on Thursday morning. Mild conditions expected to start the day Thursday, transitioning to strong winds and a rain snow mix in the afternoon with the approaching low.

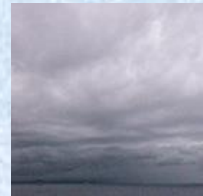
Today
20 December



Tonight



Tomorrow
21 December



Sky: Cloudy

Visibility (SM): 3-5 due to snow

Wind (kts): W 5-10

Max Temp: -1°C / 30°F

Min Wind Chill: -8°C / 18°F

Sky: Cloudy

Visibility (SM): ½-2 with fog in the late night to early morning

Wind (kts): W at 5

Min Temp: -3°C / 27°F

Min Wind Chill: -7°C / 19°F

Sky: Cloudy

Visibility (SM): Unrestricted with occasional 3-5 due to rain and snow mix becoming 1-3 in the afternoon.

Wind (kts): NW 5-10 becoming NE 15-20 gusting up to 30

Max Temp: 2°C / 36°F

Min Wind Chill: -5°C / 23°F

ASTRONOMICAL DATA

Date	Sunrise	Sunset.
20 December	2:21 a.m.	December 21 12:06 a.m.
21 December	2:21 a.m.	December 22 12:07 a.m.

Forecaster: *Jordan Young | Paul Gulli*