

Tuesday, 14 February 2023
PALMER STATION WEATHER FORECAST INFORMATION

**THIS INFORMATION IS FOR OFFICIAL USE ONLY
AND IS LIMITED TO ACTIVITIES SPONSORED OR RECOGNIZED
BY THE UNITED STATES ANTARCTIC PROGRAM**

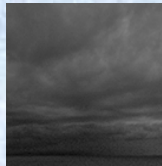
REGIONAL WEATHER SUMMARY

Minor circulation's in a broad low pressure trough extending through Drake's Passage dip closer to the peninsula with more cloud and precipitation today and tonight. Expect improving skies tomorrow as the trough fills with high pressure building in from the west...

Today
14 February



Tonight



Tomorrow
15 February



Sky: Cloudy

Visibility (SM): Unrestricted, occasional 2-4 rain, rain/snow mixed

Wind (kts): Variable 5

Max Temp: 2°C / 36°F

Min Wind Chill: -3°C / 27°F

Sky: Cloudy

Visibility (SM): 3-5 fog, rain/snow mixed

Wind (kts): Variable 5

Min Temp: 0°C / 32°F

Min Wind Chill: -3°C / 27°F

Sky: Cloudy becoming Partly Cloudy

Visibility (SM): Unrestricted

Wind (kts): Variable 5

Max Temp: 1°C / 34°F

Min Wind Chill: -3°C / 27°F

ASTRONOMICAL DATA

Date	Sunrise	Sunset
14 February	5:22 a.m.	9:35 p.m.
15 February	5:26 a.m.	9:31 p.m.

Forecaster: *Al Hay*