

Wednesday, 15 February 2023
PALMER STATION WEATHER FORECAST INFORMATION

**THIS INFORMATION IS FOR OFFICIAL USE ONLY
AND IS LIMITED TO ACTIVITIES SPONSORED OR RECOGNIZED
BY THE UNITED STATES ANTARCTIC PROGRAM**

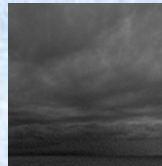
REGIONAL WEATHER SUMMARY

A ridge of high pressure is in place overhead, keeping things pretty much as they are. Cloudy skies, calm winds, and the occasional light precipitation or mist will prevail through tonight and into tomorrow. However, a low pressure system that is very-slowly approaching the Peninsula will allow the winds to pick up a bit tomorrow. Enjoy this remaining calmer weather before the system arrives!

Today
15 February



Tonight



Tomorrow
16 February



Sky: Cloudy

Visibility (SM): Unrestricted, occasionally 3 – 5 due to sleet and mist

Wind (kts): Light and Variable

Max Temp: 2°C / 36°F

Min Wind Chill: -4°C / 25°F

Sky: Cloudy

Visibility (SM): Unrestricted, occasionally 3 – 5 due to sleet and mist

Wind (kts): Light and Variable

Min Temp: 0°C / 32°F

Min Wind Chill: -4°C / 25°F

Sky: Cloudy

Visibility (SM): Unrestricted, occasionally 4 – 6 due to sleet and mist

Wind (kts): W 10-15

Max Temp: 2°C / 36°F

Min Wind Chill: -6°C / 21°F

ASTRONOMICAL DATA

Date	Sunrise	Sunset
15 February	5:26 a.m.	9:31 p.m.
16 February	5:30 a.m.	9:28 p.m.

Forecaster: *John Meyer*