

**Saturday, 25 February 2023**  
**PALMER STATION WEATHER FORECAST INFORMATION**

**THIS INFORMATION IS FOR OFFICIAL USE ONLY  
AND IS LIMITED TO ACTIVITIES SPONSORED OR RECOGNIZED  
BY THE UNITED STATES ANTARCTIC PROGRAM**

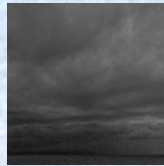
**REGIONAL WEATHER SUMMARY**

A low pressure well to the north in the Drake Passage is keeping things fairly quiet for Anvers Island. Clouds, a mild breeze, and stable temperatures will remain in place through the forecast period.

**Today**  
25 February



**Tonight**



**Tomorrow**  
26 February



**Sky:** Cloudy

**Visibility (SM):** Unrestricted

**Wind (kts):** Light and Variable

**Max Temp:** 3°C / 37°F

**Min Wind Chill:** -2°C / 28°F

**Sky:** Cloudy

**Visibility (SM):** Unrestricted

**Wind (kts):** NE 10-15

**Min Temp:** 1°C / 34°F

**Min Wind Chill:** -5°C / 23°F

**Sky:** Mostly Cloudy

**Visibility (SM):** Unrestricted

**Wind (kts):** Light and Variable

**Max Temp:** 3°C / 37°F

**Min Wind Chill:** -2°C / 28°F

**ASTRONOMICAL DATA**

<b>Date</b>	<b>Sunrise</b>	<b>Sunset</b>
25 February	6:01 a.m.	8:55 p.m.
26 February	6:04 a.m.	8:52 p.m.

**Forecaster:** *John Meyer*