

Friday, 27 January 2023

PALMER STATION WEATHER FORECAST INFORMATION

**THIS INFORMATION IS FOR OFFICIAL USE ONLY
AND IS LIMITED TO ACTIVITIES SPONSORED OR RECOGNIZED
BY THE UNITED STATES ANTARCTIC PROGRAM**

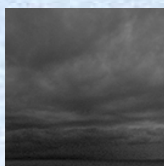
REGIONAL WEATHER SUMMARY

Overall conditions will be pretty docile today, with weak low pressure in place over the Bellingshausen Sea. However, as this broad low drifts northward, it will tighten up and increase the winds as it moves away. This will also work to clear out most of the sleet and mist that's been in and out around Anvers Island.

Today
27 January



Tonight



Tomorrow
28 January



Sky: Cloudy

Visibility (SM): Unrestricted, occasionally 3 – 5 due to sleet and mist

Wind (kts): Light and variable

Max Temp: 2°C / 36°F

Min Wind Chill: -5°C / 23°F

Sky: Cloudy

Visibility (SM): Unrestricted, occasionally 2 – 4 due to sleet and mist

Wind (kts): N 10-15

Min Temp: -1°C / 30°F

Min Wind Chill: -8°C / 18°F

Sky: Cloudy

Visibility (SM): Unrestricted

Wind (kts): N 10-15, becoming NE 15-20, gusting to 30

Max Temp: 3°C / 37°F

Min Wind Chill: -8°C / 18°F

ASTRONOMICAL DATA

Date	Sunrise	Sunset
27 January	4:15 a.m.	10:39 p.m.
28 January	4:20 a.m.	10:36 p.m.

Forecaster: *John Meyer*