

Monday, 30 January 2023

PALMER STATION WEATHER FORECAST INFORMATION

**THIS INFORMATION IS FOR OFFICIAL USE ONLY
AND IS LIMITED TO ACTIVITIES SPONSORED OR RECOGNIZED
BY THE UNITED STATES ANTARCTIC PROGRAM**

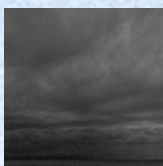
REGIONAL WEATHER SUMMARY

And the beat goes on...Low pressure in the Bellingshausen Sea to move periodic waves into the area. Expect low stratus, fog, and light snow to move in today through this evening. A bit of a break tomorrow with a return of the big dreary by evening...

Today
30 January



Tonight



Tomorrow
31 January



Sky: Cloudy

Visibility (SM): Unrestricted, becoming 1-3 snow, fog

Wind (kts): SW-NW 6-12

Max Temp: 1°C / 34°F

Min Wind Chill: -6°C / 21°F

Sky: Cloudy

Visibility (SM): 1-3 snow, fog, becoming Unrestricted by morning

Wind (kts): NW 7-15

Min Temp: 0°C / 32°F

Min Wind Chill: -6°C / 21°F

Sky: Cloudy, occasionally Mostly Cloudy

Visibility (SM): Unrestricted, becoming 2-4 rain, rain/snow mixed, fog by evening

Wind (kts): N-NE 10-15, becoming NE 15-30; NW 12-20 by evening

Max Temp: 4°C / 39°F

Min Wind Chill: -6°C / 21°F

ASTRONOMICAL DATA

Date	Sunrise	Sunset
30 January	4:27 a.m.	10:28 p.m.
31 January	4:31 a.m.	10:25 p.m.

Forecaster: *Al Hay*