

Friday, 17 March 2023

PALMER STATION WEATHER FORECAST INFORMATION

**THIS INFORMATION IS FOR OFFICIAL USE ONLY
AND IS LIMITED TO ACTIVITIES SPONSORED OR RECOGNIZED
BY THE UNITED STATES ANTARCTIC PROGRAM**

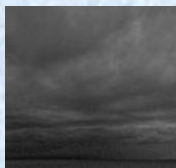
REGIONAL WEATHER SUMMARY

High pressure ridging over the central and northern Antarctic Peninsula today building in behind a low pressure system in the Drake Passage. Tomorrow expect next low pressure trough developing near Adelaide Island and moving up the west coast towards Anvers Island. Indications are for light winds from southwest-west today increasing tomorrow with increased cloud cover and precipitation.

Today
17 March



Tonight



Tomorrow
18 March



Sky: Mostly Cloudy

Visibility (SM): Unrestricted, with periods of 1/2-2 early AM in freezing fog/mist

Wind (kts): SW-W 8-12, becoming W-NW 8-12

Max Temp: 0°C / 32°F

Min Wind Chill: -8°C / 18°F

Sky: Cloudy

Visibility (SM): Unrestricted, with periods of 3-5 in snow showers, and fog/mist late

Wind (kts): Variable 4-8, becoming N-NE 15-20 gust to 25 late

Min Temp: -2°C / 28°F

Min Wind Chill: -9C / 16°F

Sky: Cloudy

Visibility (SM): 4-6, with periods of 1/2-2 in snow, rain/snow mix, and fog/mist

Wind (kts): N-NE 15-25 gusts to 30, becoming SW-W 10-20 gusts to 25

Max Temp: 1°C / 34°F

Min Wind Chill: -8°C / 18°F

ASTRONOMICAL DATA

Date	Sunrise	Sunset
17 March	7:05 a.m.	7:42 p.m.
18 March	7:08 a.m.	7:38 p.m.

Forecaster: *Mark Millen*