

Saturday, 27 May 2023

PALMER STATION WEATHER FORECAST INFORMATION

**THIS INFORMATION IS FOR OFFICIAL USE ONLY
AND IS LIMITED TO ACTIVITIES SPONSORED OR RECOGNIZED
BY THE UNITED STATES ANTARCTIC PROGRAM**

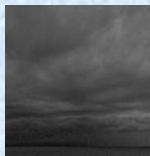
REGIONAL WEATHER SUMMARY

An area of low pressure in the Weddell Sea moves to the northeast as a high pressure ridge strengthens and approaches the west coast of the Antarctic Peninsula with strong southwesterly low level winds. Indications are for strong and gusty winds with low level clouds and precipitation from the southwest today as the high pressure ridge nears Anvers Island. Expect decreasing winds, precipitation ending, clouds lifting, and colder temperatures tonight and tomorrow as the ridge begins to weaken.

Today
27 May



Tonight



Tomorrow
28 May



Sky: Cloudy

Visibility (SM): Unrestricted, occasional 1/2-2 in snow, blowing snow, freezing fog/mist

Wind (kts): S-SW 15-25 gusts to 30, becoming S-SW 10-15

Max Temp: -2°C / 28°F

Min Wind Chill: -13°C / 9°F

Sky: Cloudy, becoming Mostly Cloudy

Visibility (SM): Unrestricted, occasional 2-4 in snow, freezing fog/mist early

Wind (kts): S-SW 10-20

Min Temp: -6°C / 21°F

Min Wind Chill: -12°C / 10°F

Sky: Mostly Cloudy

Visibility (SM): Unrestricted

Wind (kts): S-SW 8-12, occasional Variable 5-10

Max Temp: -5°C / 23°F

Min Wind Chill: -12C / 10°F

ASTRONOMICAL DATA

Date	Sunrise	Sunset
27 May	10:42 a.m.	3:43 p.m.
28 May	10:45 a.m.	3:40 p.m.

Forecaster: *Mark Millen*