

Sunday, 26 November 2023
PALMER STATION WEATHER FORECAST INFORMATION

**THIS INFORMATION IS FOR OFFICIAL USE ONLY
AND IS LIMITED TO ACTIVITIES SPONSORED OR RECOGNIZED
BY THE UNITED STATES ANTARCTIC PROGRAM**

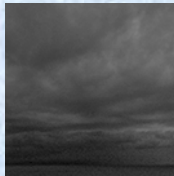
REGIONAL WEATHER SUMMARY

High Pressure moves over the region, however a weakening low over the Bellingshausen Sea continues to push moisture towards Anvers Island over the next 48 hours. Tomorrow, a frontal boundary moves towards the peninsula steadily increasing winds in the afternoon.

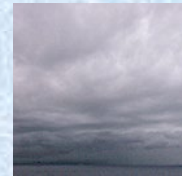
Today
26 November



Tonight



Tomorrow
27 November



Sky: Mostly Cloudy

Visibility (SM): Unrestricted; occasionally 3-5 due to light rain/snow mix and fog early morning

Wind (kts): SW-W 10-20

Max Temp: -1°C / 30°F

Min Wind Chill: -10°C / 14°F

Sky: Cloudy

Visibility (SM): Unrestricted

Wind (kts): SW-W 7-12

Min Temp: -3°C / 27°F

Min Wind Chill: -9°C / 15°F

Sky: Cloudy

Visibility (SM): Unrestricted; becoming 5-7 due to light rain

Wind (kts): N-NE 10-15; becoming NE 12-18 gusting 25

Max Temp: 1°C / 34°F

Min Wind Chill: -8°C / 17°F

ASTRONOMICAL DATA

Date	Sunrise	Sunset
26 November	3:11 a.m.	10:57 p.m.
27 November	3:08 a.m.	11:01 p.m.

Forecaster: *Regis Sullivan*