

Friday, 8 September 2023

PALMER STATION WEATHER FORECAST INFORMATION

**THIS INFORMATION IS FOR OFFICIAL USE ONLY
AND IS LIMITED TO ACTIVITIES SPONSORED OR RECOGNIZED
BY THE UNITED STATES ANTARCTIC PROGRAM**

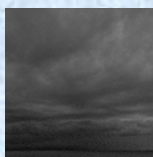
REGIONAL WEATHER SUMMARY

High pressure continues to reign. A brief bit of light snow and/or sleet will be possible early on today, but the rest of the forecast period will just be cloudy. Light winds will also continue to give a nice break from the biting wind chills.

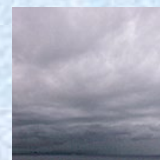
Today
8 September



Tonight



Tomorrow
9 September



Sky: Cloudy, becoming Mostly Cloudy

Visibility (SM): Unrestricted, occasionally 4 – 6 due to light snow, sleet, and mist

Wind (kts): Light and Variable

Max Temp: -1°C / 30°F

Min Wind Chill: -6°C / 21°F

Sky: Mostly Cloudy to Cloudy

Visibility (SM): Unrestricted

Wind (kts): Light and Variable

Min Temp: -2°C / 28°F

Min Wind Chill: -6°C / 21°F

Sky: Mostly Cloudy to Cloudy

Visibility (SM): Unrestricted

Wind (kts): Light and Variable

Max Temp: -1°C / 30°F

Min Wind Chill: -6°C / 21°F

ASTRONOMICAL DATA

Date	Sunrise	Sunset
8 September	7:54 a.m.	6:34 p.m.
9 September	7:51 a.m.	6:37 p.m.

Forecaster: *John Meyer*