

Friday, 26 April 2024

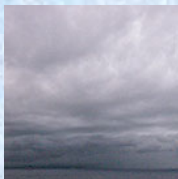
**PALMER STATION WEATHER FORECAST INFORMATION**

**THIS INFORMATION IS FOR OFFICIAL USE ONLY  
AND IS LIMITED TO ACTIVITIES SPONSORED OR RECOGNIZED  
BY THE UNITED STATES ANTARCTIC PROGRAM**

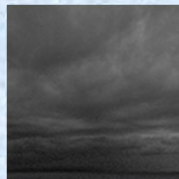
**REGIONAL WEATHER SUMMARY**

A break between the lows leaves Palmer in an area of high pressure today. High levels of lower level moisture and stagnant winds increase the probability of morning fog. Tomorrow another low tracks towards the Drake Passage, though this time precipitation on station should remain relatively light.

**Today**  
26 April



**Tonight**



**Tomorrow**  
27 April



**Sky:** Mostly cloudy

**Visibility (SM):** ½ - 3 in fog, becoming unrestricted with light snow

**Wind (kts):** N at 5-10

**Max Temp:** -1°C / 30°F

**Min Wind Chill:** -9°C / 15°F

**Sky:** Cloudy becoming mostly cloudy

**Visibility (SM):** Unrestricted

**Wind (kts):** N at 5-10, becoming N-NE at 15-20

**Min Temp:** -2°C / 28°F

**Min Wind Chill:** -10°C / 14°F

**Sky:** Mostly cloudy

**Visibility (SM):** Unrestricted with occasional drops to 2-4 in snow and blowing snow

**Wind (kts):** NE at 15-25 gusting 35

**Max Temp:** 0°C / 32°F

**Min Wind Chill:** -11°C / 15°F

**ASTRONOMICAL DATA**

Date	Sunrise	Sunset.
26 April	9:10 a.m.	5:16 p.m.
27 April	9:13 a.m.	5:13 p.m.

**Forecaster:** *Jenna Deutschman*