

Friday, 23 February, 2024

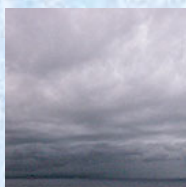
PALMER STATION WEATHER FORECAST INFORMATION

**THIS INFORMATION IS FOR OFFICIAL USE ONLY
AND IS LIMITED TO ACTIVITIES SPONSORED OR RECOGNIZED
BY THE UNITED STATES ANTARCTIC PROGRAM**

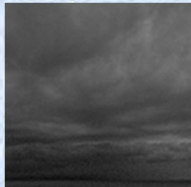
REGIONAL WEATHER SUMMARY

Today some lower cloud cover should linger over Palmer Station with possible fog developing from abundant low level moisture in the morning. A low moving through the Bellingshausen Sea will sweep the Antarctic Peninsula tomorrow, bringing in mixed precipitation throughout the day.

Today
23 February



Tonight



Tomorrow
24 February



Sky: Cloudy becoming mostly cloudy

Visibility (SM): 3-5 with mixed rain/snow and fog, becoming unrestricted

Wind (kts): W-NW at 5-10

Max Temp: 2°C / 36°F

Min Wind Chill: -4°C / 25°F

Sky: Cloudy

Visibility (SM): Unrestricted

Wind (kts): W-NW at 5-10

Min Temp: -1°C / 30°F

Min Wind Chill: -6°C / 21°F

Sky: Cloudy

Visibility (SM): 1/2-3 in morning fog, becoming 1-3 with mixed rain/snow and in the afternoon

Wind (kts): Variable at 3-6, becoming NW at 10-15

Max Temp: 2°C / 36°F

Min Wind Chill: -4°C / 25°F

ASTRONOMICAL DATA

Date	Sunrise	Sunset.
23 February	5:53 a.m.	9:03 p.m.
24 February	5:56 a.m.	8:59 p.m.

Forecaster: Jenna Deutschman