

Friday, 5 January, 2024

PALMER STATION WEATHER FORECAST INFORMATION

**THIS INFORMATION IS FOR OFFICIAL USE ONLY
AND IS LIMITED TO ACTIVITIES SPONSORED OR RECOGNIZED
BY THE UNITED STATES ANTARCTIC PROGRAM**

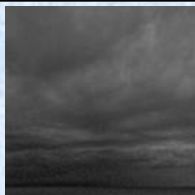
REGIONAL WEATHER SUMMARY

A frontal boundary is moving across the Bellingshausen Sea and will move across the Antarctic Peninsula in the morning. Precipitation will fall most of the day of Friday and intermittently on Saturday as moisture begins to dissipate as the front passes.

Today
5 January



Tonight



Tomorrow
6 January



Sky: Cloudy

Visibility (SM): 3-5 with mixed rain and snow with periods of unrestricted

Wind (kts): NW-N at 10-15

Max Temp: 4°C / 39°F

Min Wind Chill: -5°C / 23°F

Sky: Cloudy

Visibility (SM): Unrestricted with temporary periods of 3-5 with snow

Wind (kts): NW at 10-15

Min Temp: 0°C / 32°F

Min Wind Chill: -6°C / 21°F

Sky: Mostly Cloudy

Visibility (SM): Unrestricted with temporary periods of 3-5 with snow

Wind (kts): NW at 8-13

Max Temp: 2°C / 36°F

Min Wind Chill: -6°C / 21°F

ASTRONOMICAL DATA

Date	Sunrise	Sunset.
5 January	2:51 a.m.	11:48 p.m.
6 January	2:54 a.m.	11:46 p.m.

Forecaster: *Jordan Young | Paul Gulli*