

Wednesday, 10 January, 2024

PALMER STATION WEATHER FORECAST INFORMATION

**THIS INFORMATION IS FOR OFFICIAL USE ONLY
AND IS LIMITED TO ACTIVITIES SPONSORED OR RECOGNIZED
BY THE UNITED STATES ANTARCTIC PROGRAM**

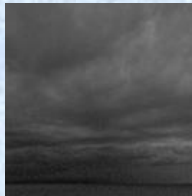
REGIONAL WEATHER SUMMARY

The day will start with mostly clear skies and light winds before a frontal boundary will begin to move in from the Bellingshausen Sea and bring in stronger winds and precipitation. Snowfall will change to flurries after the frontal passage on Wednesday night, but strong winds will remain until Thursday afternoon.

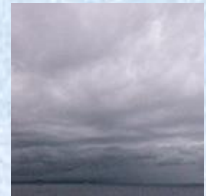
Today
10 January



Tonight



Tomorrow
11 January



Sky: Partly Cloudy becoming Cloudy

Visibility (SM): Unrestricted becoming 1-3 with snow

Wind (kts): NW 6-12 becoming N 10-15 gusting 25

Max Temp: 1°C / 34°F

Min Wind Chill: -6°C / 21°F

Sky: Cloudy

Visibility (SM): Unrestricted with snow flurries

Wind (kts): SW 10-15 gusting 25

Min Temp: -3°C / 27°F

Min Wind Chill: -10°C / 14°F

Sky: Mostly Cloudy

Visibility (SM): Unrestricted with periods of 3-5 with snow

Wind (kts): SW 12-18 gusting 30 becoming 10-15

Max Temp: 0°C / 34°F

Min Wind Chill: -8°C / 18°F

ASTRONOMICAL DATA

Date	Sunrise	Sunset.
10 January	3:09 a.m.	11:35 p.m.
11 January	3:12 a.m.	11:32 p.m.

Forecaster: *Jordan Young | Paul Gulli*