

Monday, 8 July 2024

PALMER STATION WEATHER FORECAST INFORMATION

**THIS INFORMATION IS FOR OFFICIAL USE ONLY
AND IS LIMITED TO ACTIVITIES SPONSORED OR RECOGNIZED
BY THE UNITED STATES ANTARCTIC PROGRAM**

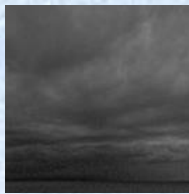
REGIONAL WEATHER SUMMARY

High pressure will build over the Antarctic Peninsula as low pressure moves into the Weddell Sea. Winds will decrease throughout the day on Monday, but snow will continue to fall intermittently. Another low will move in from the Bellingshausen Sea on Tuesday morning. There will not be much precipitation with the low, but winds will start gusting at high speeds in the afternoon and continue for the remainder of the day into the night.

Today
8 July



Tonight



Tomorrow
9 July



Sky: Cloudy

Visibility (SM): Unrestricted, occasional 3-5 with snow

Wind (kts): SW at 10-15 becoming N at 10-15

Max Temp: -4°C / 25°F

Min Wind Chill: -13°C / 9°F

Sky: Cloudy

Visibility (SM): Unrestricted with snow flurries

Wind (kts): N at 10-15

Min Temp: -6°C / 21°F

Min Wind Chill: -14°C / 7°F

Sky: Cloudy

Visibility (SM): Unrestricted, occasional 3-5 with snow

Wind (kts): NE 15-20 gusting 25 becoming SE at 25-30 gusting 45

Max Temp: -2°C / 28°F

Min Wind Chill: -14°C / 7°F

ASTRONOMICAL DATA

Date	Sunrise	Sunset.
8 July	11:08 a.m.	3:34 p.m.
9 July	11:06 a.m.	3:36 p.m.

Forecaster: *Jordan Young*