

Monday, 3 June 2024

**PALMER STATION WEATHER FORECAST INFORMATION**

**THIS INFORMATION IS FOR OFFICIAL USE ONLY  
AND IS LIMITED TO ACTIVITIES SPONSORED OR RECOGNIZED  
BY THE UNITED STATES ANTARCTIC PROGRAM**

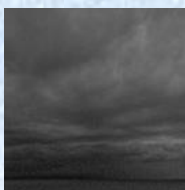
**REGIONAL WEATHER SUMMARY**

Low pressure will move across the Antarctic Peninsula and decay over the Weddell Sea. High pressure will move in from the north, but cloud coverage will linger for the forecast period. Winds will be light throughout Monday and Tuesday with snow falling intermittently.

**Today**  
3 June



**Tonight**



**Tomorrow**  
4 June



**Sky:** Cloudy

**Visibility (SM):** Unrestricted with light snow, occasional drops to 2-4 in snow and mist

**Wind (kts):** Variable 3-8

**Max Temp:** -2°C / 27°F

**Min Wind Chill:** -8°C / 18°F

**Sky:** Cloudy

**Visibility (SM):** Unrestricted with occasional snow flurries

**Wind (kts):** SW 8-13

**Min Temp:** -5°C / 23°F

**Min Wind Chill:** -12°C / 10°F

**Sky:** Cloudy

**Visibility (SM):** Unrestricted, 2-4 with snow in the afternoon

**Wind (kts):** SW 10-15

**Max Temp:** -4°C / 25°F

**Min Wind Chill:** -13°C / 9°F

**ASTRONOMICAL DATA**

Date	Sunrise	Sunset.
3 June	11:02 a.m.	3:25 p.m.
4 June	11:04 a.m.	3:24 p.m.

**Forecaster:** *Jordan Young*