

Monday, 10 June 2024

**PALMER STATION WEATHER FORECAST INFORMATION**

**THIS INFORMATION IS FOR OFFICIAL USE ONLY  
AND IS LIMITED TO ACTIVITIES SPONSORED OR RECOGNIZED  
BY THE UNITED STATES ANTARCTIC PROGRAM**

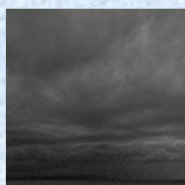
**REGIONAL WEATHER SUMMARY**

The strong high pressure system continues to propel moisture through the Bellingshausen Sea towards station. It finally will finally get pushed north by an incoming low pressure system, approaching station tomorrow night.

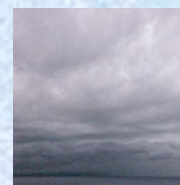
**Today**  
10 June



**Tonight**



**Tomorrow**  
11 June



**Sky:** Cloudy

**Visibility (SM):** Unrestricted with drops to 2-4 in mist and snow

**Wind (kts):** SW at 5-15

**Max Temp:** -5°C / 23°F

**Min Wind Chill:** -14°C / 7°F

**Sky:** Cloudy

**Visibility (SM):** Unrestricted with light snow, with drops to 2-4 in mist

**Wind (kts):** Variable 3-8

**Min Temp:** -6°C / 21°F

**Min Wind Chill:** -12°C / 11°F

**Sky:** Cloudy

**Visibility (SM):** Unrestricted with occasional light snow

**Wind (kts):** NE 10-15

**Max Temp:** -4°C / 25°F

**Min Wind Chill:** -14°C / 7°F

**ASTRONOMICAL DATA**

Date	Sunrise	Sunset.
10 June	11:16 a.m.	3:14 p.m.
11 June	11:18 a.m.	3:13 p.m.

**Forecaster:** *Jenna Deutschman*