

Friday, 28 June 2024

**PALMER STATION WEATHER FORECAST INFORMATION**

**THIS INFORMATION IS FOR OFFICIAL USE ONLY  
AND IS LIMITED TO ACTIVITIES SPONSORED OR RECOGNIZED  
BY THE UNITED STATES ANTARCTIC PROGRAM**

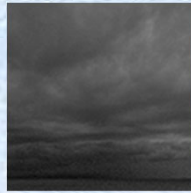
**REGIONAL WEATHER SUMMARY**

Today a high pressure system in the Drake Passage draws cloud cover and winds from the north. A strong low pressure system weakens in the Bellingshausen Sea as it tracks towards Palmer. Winds will begin to shift overnight and rise over the course of the day, followed by snow beginning in the afternoon.

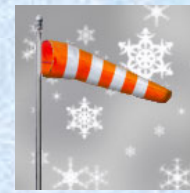
**Today**  
28 June



**Tonight**



**Tomorrow**  
29 June



**Sky:** Mostly cloudy

**Visibility (SM):** Unrestricted, occasionally 3-5 in mist

**Wind (kts):** N-NE at 5-10, becoming 10-15

**Max Temp:** -5°C / 23°F

**Min Wind Chill:** -15°C / 5°F

**Sky:** Cloudy

**Visibility (SM):** Unrestricted with occasional light snow

**Wind (kts):** NE at 12-17, becoming N-NW

**Min Temp:** -6°C / 21°F

**Min Wind Chill:** -14°C / 7°F

**Sky:** Cloudy

**Visibility (SM):** Unrestricted, becoming 1-3 with snow and mist

**Wind (kts):** NW at 15-20, becoming 20-25 gusting 35

**Max Temp:** -2°C / 28°F

**Min Wind Chill:** -13°C / 8°F

**ASTRONOMICAL DATA**

Date	Sunrise	Sunset.
28 June	11:23 a.m.	3:15 p.m.
29 June	11:22 a.m.	3:17 p.m.

**Forecaster:** *Jenna Deutschman*