

Tuesday, 19 March, 2024

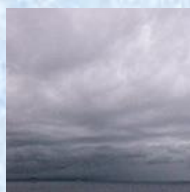
**PALMER STATION WEATHER FORECAST INFORMATION**

**THIS INFORMATION IS FOR OFFICIAL USE ONLY  
AND IS LIMITED TO ACTIVITIES SPONSORED OR RECOGNIZED  
BY THE UNITED STATES ANTARCTIC PROGRAM**

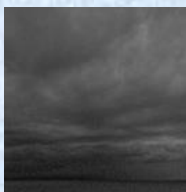
**REGIONAL WEATHER SUMMARY**

A high pressure ridge weakens and moves to the north of the Weddell Sea as a low pressure system develops in the Bellingshausen Sea. Indications are for low clouds and intermittent light precipitation continuing into tonight along with light winds. Expect clouds beginning to lift and favorable conditions tomorrow as temperatures trend slightly colder.

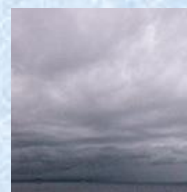
**Today**  
19 March



**Tonight**



**Tomorrow**  
20 March



**Sky:** Cloudy

**Visibility (SM):** Unrestricted, with periods of 3-5 in light intermittent rain/snow mix and mist/fog

**Wind (kts):** W-NW 4-8

**Max Temp:** 0°C / 32°F

**Min Wind Chill:** -5°C / 23°F

**Sky:** Cloudy

**Visibility (SM):** Unrestricted, with periods of 4-6 in light intermittent rain/snow mix and mist/fog

**Wind (kts):** NW-N 4-8

**Min Temp:** -2°C / 29°F

**Min Wind Chill:** -6°C / 21°F

**Sky:** Cloudy

**Visibility (SM):** Unrestricted

**Wind (kts):** Variable 4-8

**Max Temp:** -1°C / 31°F

**Min Wind Chill:** -5°C / 23°F

**ASTRONOMICAL DATA**

Date	Sunrise	Sunset.
19 March	7:13 a.m.	7:32 p.m.
20 March	7:16 a.m.	7:28 p.m.

**Forecaster:** *Mark Millen*