

Sunday, 31 March 2024

PALMER STATION WEATHER FORECAST INFORMATION

**THIS INFORMATION IS FOR OFFICIAL USE ONLY
AND IS LIMITED TO ACTIVITIES SPONSORED OR RECOGNIZED
BY THE UNITED STATES ANTARCTIC PROGRAM**

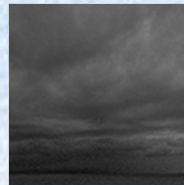
REGIONAL WEATHER SUMMARY

A large low pressure system in the Bellingshausen Sea moves along the Antarctic Peninsula. The front will pass through Palmer Station, bringing a temperature increase with mixed precipitation and higher winds tomorrow.

Today
31 March



Tonight



Tomorrow
1 April



Sky: Mostly cloudy

Visibility (SM): Unrestricted with drops to 4-6 with snow

Wind (kts): NW at 10-15 gusting 25

Max Temp: 0°C / 32°F

Min Wind Chill: -7°C / 19°F

Sky: Cloudy

Visibility (SM): 1-3 with snow

Wind (kts): W at 15-20

Min Temp: -2°C / 28°F

Min Wind Chill: -8°C / 18°F

Sky: Cloudy

Visibility (SM): 1-3 with snow/rain

Wind (kts): NW at 10-15, becoming N 20-25 gusting 35

Max Temp: 2°C / 36°F

Min Wind Chill: -8°C / 18°F

ASTRONOMICAL DATA

Date	Sunrise	Sunset.
31 March	7:50 a.m.	6:48 p.m.
1 April	7:53 a.m.	6:44 p.m.

Forecaster: Jenna Deutschman