

Thursday, 2 May 2024

PALMER STATION WEATHER FORECAST INFORMATION

**THIS INFORMATION IS FOR OFFICIAL USE ONLY
AND IS LIMITED TO ACTIVITIES SPONSORED OR RECOGNIZED
BY THE UNITED STATES ANTARCTIC PROGRAM**

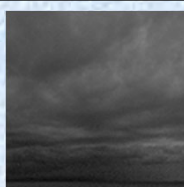
REGIONAL WEATHER SUMMARY

Two decaying lows progressing towards Palmer Station will move cloud cover and precipitation towards station. The pressure gradient weakens significantly and will keep winds light throughout the forecast period.

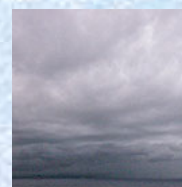
Today
2 May



Tonight



Tomorrow
3 May



Sky: Cloudy

Visibility (SM): ½-3 in mixed sleet/snow and fog, becoming unrestricted with light snow

Wind (kts): NW-N at 10-15

Max Temp: 0°C / 32°F

Min Wind Chill: -8°C / 18°F

Sky: Cloudy

Visibility (SM): Unrestricted with occasional light snow

Wind (kts): NW-N at 10-15

Min Temp: -2°C / 28°F

Min Wind Chill: -8°C / 19°F

Sky: Cloudy

Visibility (SM): ½-3 in fog, becoming unrestricted

Wind (kts): N-NE at 5-10

Max Temp: -1°C / 30°F

Min Wind Chill: -8°C / 18°F

ASTRONOMICAL DATA

Date	Sunrise	Sunset.
2 May	9:28 a.m.	4:56 p.m.
3 May	9:31 a.m.	4:53 p.m.

Forecaster: *Jenna Deutschman*