

Sunday, 08 September 2024

**PALMER STATION WEATHER FORECAST INFORMATION**

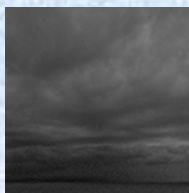
**THIS INFORMATION IS FOR OFFICIAL USE ONLY  
AND IS LIMITED TO ACTIVITIES SPONSORED OR RECOGNIZED  
BY THE UNITED STATES ANTARCTIC PROGRAM**

A large low pressure system is passing across the extreme northern tip of the Antarctic Peninsula, fortunately all of the energy associated with this low is well north of Anvers Island. As a result, conditions at the station will remain mild with light winds and relatively less cloud cover until the influence of the next migratory system degrades conditions early tomorrow morning.

**Today**  
08 September



**Tonight**



**Tomorrow**  
09 September



**Sky:** Mostly Cloudy becoming Partly Cloudy

**Visibility (SM):** Unrestricted

**Wind (kts):** S 10

**Max Temp:** -4°C / -25°F

**Min Wind Chill:** -11°C / 12°F

**Sky:** Partly Cloudy becoming Cloudy

**Visibility (SM):** Unrestricted

**Wind (kts):** SW 10

**Min Temp:** -9°C / 16°F

**Min Wind Chill:** -16°C / 3°F

**Sky:** Cloudy

**Visibility (SM):** 2-4 with light snow

**Wind (kts):** Light and variable becoming W10 in the afternoon

**Max Temp:** -8°C / 18°F

**Min Wind Chill:** -15°C / 5°F

**ASTRONOMICAL DATA**

Date	Sunrise	Sunset
08 September	7:52 a.m.	6:36 p.m.
09 September	7:48 a.m.	6:39 p.m.

**Forecaster:** *Shane Thornton*