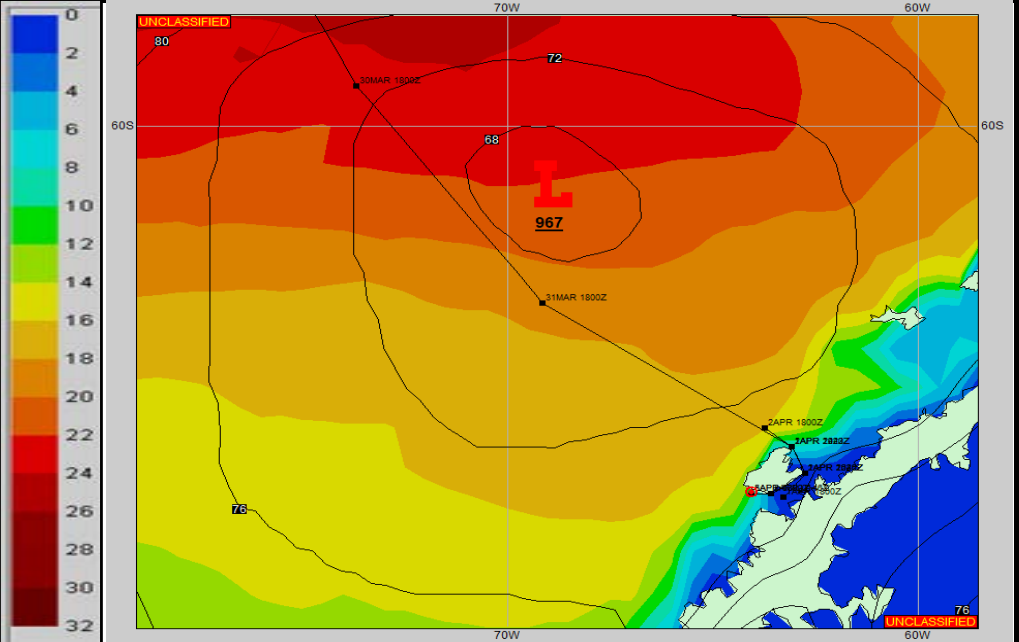
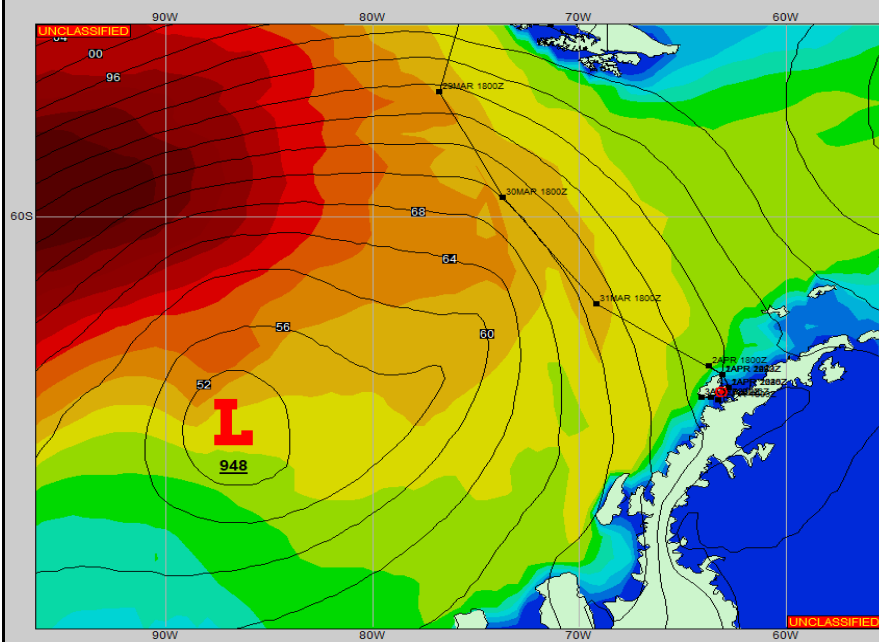


SURFACE ANALYSIS 3-Apr-2022 00Z

Seas (FT)

SURFACE FORECAST 4-Apr-2022 12Z



METSIT 00Z 3-Apr The low continues to weaken as it makes its way through the Drake Passage, producing gusty winds and intermittent snow showers in the Anvers Island/Palmer Station vicinity. This is the final forecast for this crossing unless otherwise requested. Forecasts below are for worst case conditions anticipated in the Gerlache Strait if an extended dwell time is desired/necessary. See Palmer Daily forecasts for weather updates while in port.

FORECASTER NOTES Winds may differ from those forecast due to funneling/sheltering effects of islands.

VALID TIME	3-Apr 06Z	3-Apr 12Z	3-Apr 18Z	4-Apr 00Z	4-Apr 06Z	4-Apr 12Z	4-Apr 18Z	5-Apr 00Z
SKY CONDITION	CLOUDY	CLOUDY	CLOUDY	CLOUDY				
WEATHER	SNOW & FOG	SNOW & FOG	SNOW & FOG	SNOW & FOG				
VISIBILITY (NM)	1/2 - 1	1 - 3	1 - 3	1/2 - 1				
SFC WINDS (DIR & KTS)	NE 25-30 GUST TO 45	NE 25-30 GUST TO 40	NE 25-30 GUST TO 40	NE 25-30 GUST TO 40				
SFC MAX/MIN (°C)	2 / -3							
SST RANGE (°C)	1 / 0							
SEAS (DIR & FT)	CNFS 0-2	CNFS 0-2	CNFS 0-2	CNFS 0-2				
ICE ACCRETION	LIGHT	LIGHT	LIGHT	LIGHT				