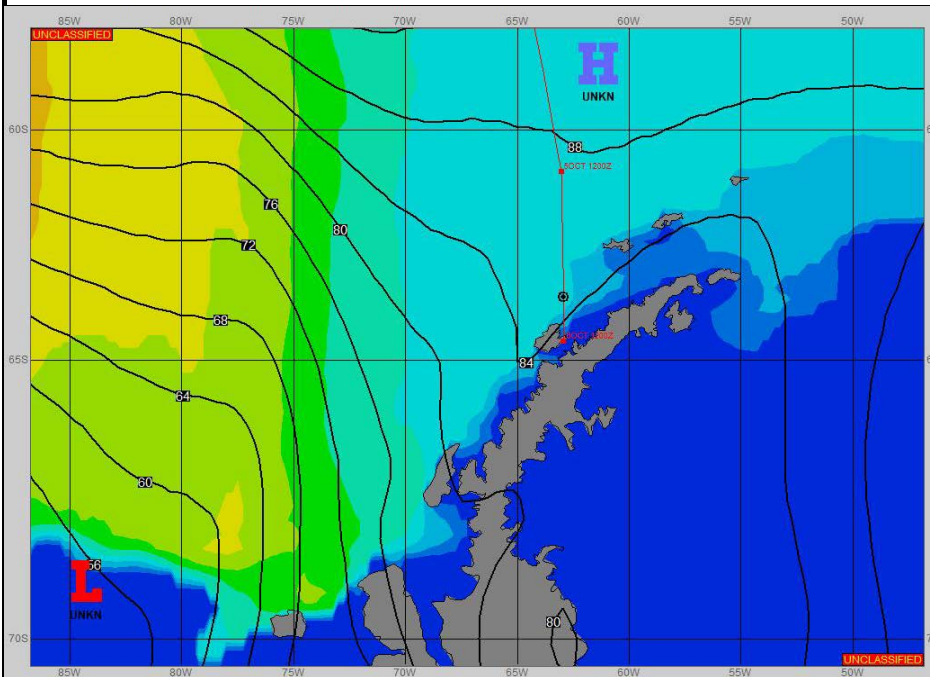
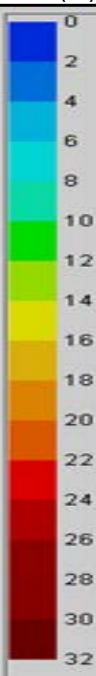


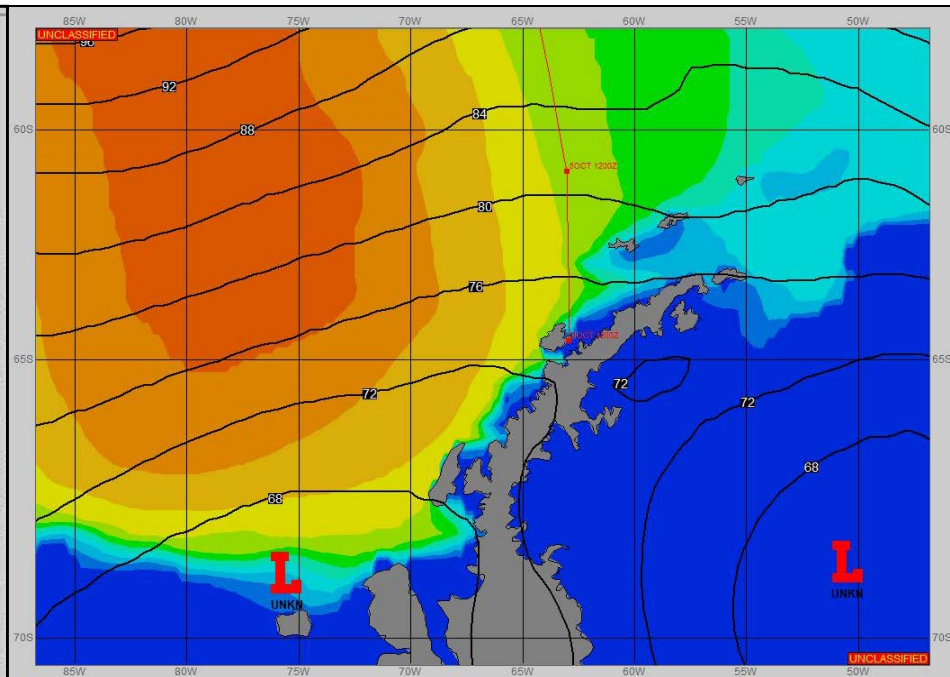
**SURFACE ANALYSIS 6-Oct-2022 06Z**



Seas (FT)



**SURFACE FORECAST 7-Oct-2022 18Z**



**METSIT 06Z 6-Oct**

TRANSIENT RIDGE OF HIGH PRESSURE MOVING EAST FROM ANVERS ISLAND KEEPS ESTIMATED SHIP POSITION UNDER MOSTLY CLOUDY SKIES. WIND SPEEDS WILL CONTINUE TO INCREASE ACROSS THE AREA THROUGH 06/2100Z AS A FRONTAL BOUNDARY INTRUDES FROM THE WEST-NORTHWEST. EXPECT WINDS GUSTING NEAR 50 KNOTS FROM 06/1800Z THROUGH 07/0000Z WITH REDUCED VISIBILITY IN SNOW IN ASSOCIATION WITH FRONTAL PASSAGE.

**FORECASTER NOTES**

THIS WILL BE THE FINAL SHIP FORECAST FOR THIS LEG OF THE VOYAGE. PLEASE REFER TO THE PALMER DAILY FORECAST WHILE IN PORT. WE WILL RECOMMENCE SHIP FORECASTS UPON RECEIPT OF MOVREP. ENJOY YOUR STAY!

VALID TIME	6-Oct 12Z	6-Oct 18Z	7-Oct 00Z	7-Oct 06Z	7-Oct 12Z	7-Oct 18Z	8-Oct 00Z	8-Oct 06Z
SKY CONDITION	MOSTLY CLOUDY	MOSTLY CLOUDY	CLOUDY					
WEATHER	NONE	SNOW	SNOW					
VISIBILITY (NM)	UNRESTRICTED	3 - 5	3 - 5					
SFC WINDS (DIR & KTS)	NE-E 20-30	E-SE 25-40 GUST 50	NE-SE 25-30					
SFC MAX/MIN (°C)	1/-1							
SST RANGE (°C)	-.5/-1.5							
SEAS (DIR & FT)	NW 1-3	NW 1-3	NW 1-3					
ICE ACCRETION	LIGHT	LIGHT	LIGHT					