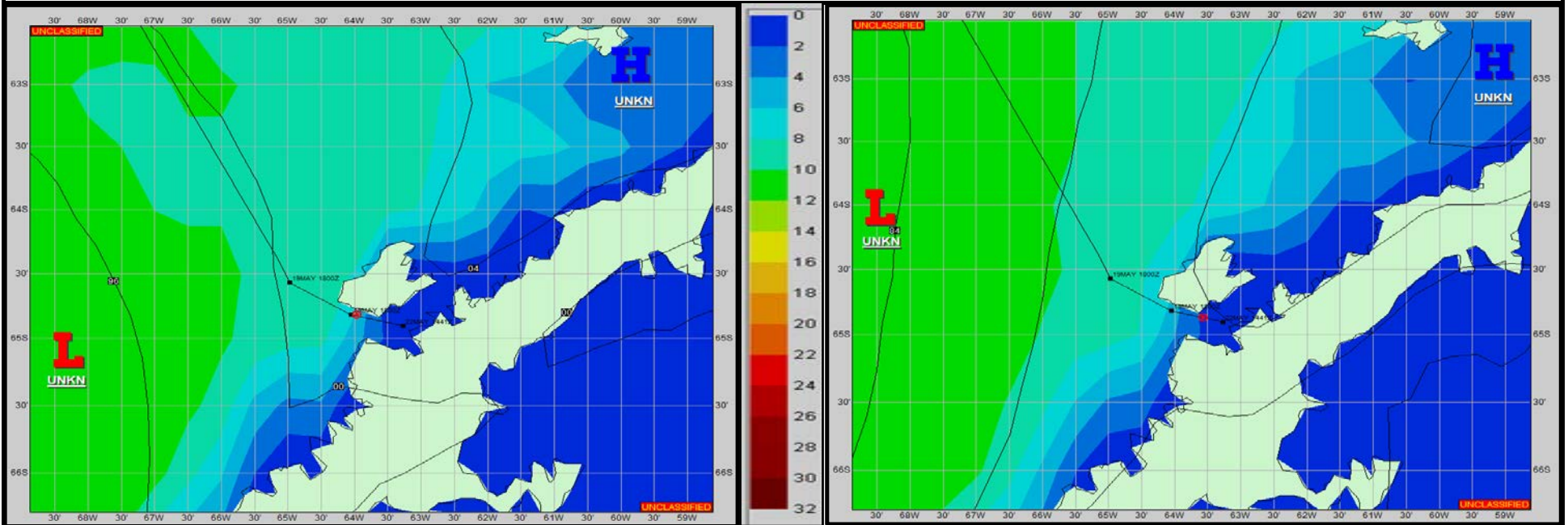


SURFACE ANALYSIS 20-May-2022 00Z

Seas (FT)

SURFACE FORECAST 21-May-2022 12Z



METSIT 00Z 20-May The general flow pattern remains the same: north-to-south, low pressure to the west, high to the east. Troughs propagating southward within this atmospheric flow will generate waves of precipitation and occasionally gusty winds on and around Anvers Island. This is my final forecast for this crossing unless otherwise requested; see Palmer Station daily forecast for weather in port.

FORECASTER NOTES Winds may differ from those forecast due to funneling/sheltering effects of islands.

VALID TIME	20-May 06Z	20-May 12Z	20-May 18Z	21-May 00Z	21-May 06Z	21-May 12Z	21-May 18Z	22-May 00Z
SKY CONDITION	CLOUDY	CLOUDY	CLOUDY	CLOUDY	CLOUDY	CLOUDY	CLOUDY	CLOUDY
WEATHER	SNOW & FOG	SNOW & FOG	SNOW & FOG	SNOW & FOG	SNOW & FOG	VCNTY SNOW	VCNTY SNOW	SNOW & FOG
VISIBILITY (NM)	1/2 - 1	1/2 - 1	1/2 - 1	1 - 3	1 - 3	UNRESTRICTED	UNRESTRICTED	1 - 3
SFC WINDS (DIR & KTS)	NE 15-20 GUST 25	NE 10-15	NE 10-15	NE 15-20 GUST 25	NE 15-20 GUST 30	NE 15-20 GUST 30	NE 15-20 GUST 30	NE 15-20 GUST 25
SFC MAX/MIN (°C)	3 / -3			3 / -3				
SST RANGE (°C)	0 / -1			0 / -1				
SEAS (DIR & FT)	W 4-6	W 3-5	W 3-5	W 2-4	CNFS D 1-3	CNFS D 1-3	CNFS D 1-3	CNFS D 1-3
ICE ACCRETION	MODERATE	LIGHT	LIGHT	MODERATE	MODERATE	MODERATE	MODERATE	MODERATE