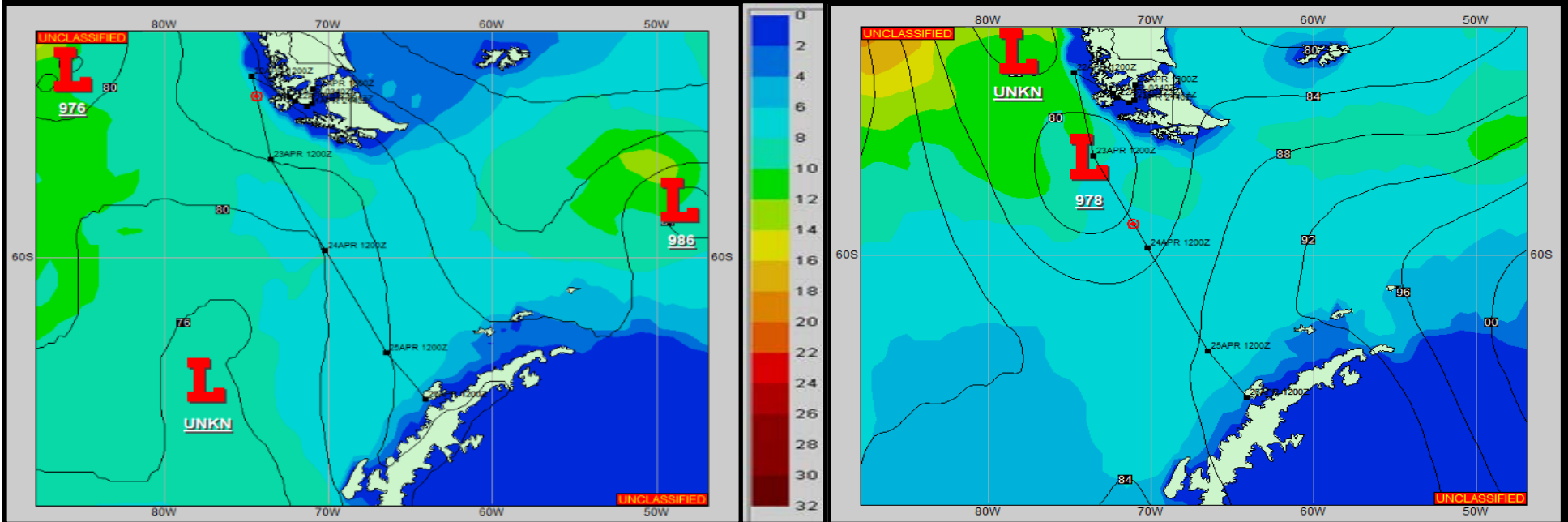


SURFACE ANALYSIS 22-Apr-2022 18Z

Seas (FT)

SURFACE FORECAST 24-Apr-2022 06Z



METSIT 18Z 22-Apr A ridge is currently being replaced by a trough along your route, much as expected. Rainy, foggy conditions will continue through this period. Winds will be variable around a smaller-scale migratory low center (depicted in upper right image) now expected to move southward, essentially accompanying you on the way to Anvers Island. Still, wind and waves remain relatively light for the Drake.

FORECASTER NOTES Winds may differ from those forecast due to funneling/sheltering effects of islands.

VALID TIME	23-Apr 00Z	23-Apr 06Z	23-Apr 12Z	23-Apr 18Z	24-Apr 00Z	24-Apr 06Z	24-Apr 12Z	24-Apr 18Z
SKY CONDITION	CLOUDY	CLOUDY	CLOUDY	CLOUDY	CLOUDY	CLOUDY	CLOUDY	MOSTLY CLOUDY
WEATHER	RAIN & FOG	RAIN & FOG	RAIN & FOG	RAIN & FOG	RAIN & FOG	RAIN & FOG	RAIN & FOG	VCNTY RAIN
VISIBILITY (NM)	4 - 6	4 - 6	4 - 6	3 - 5	4 - 6	4 - 6	4 - 6	UNRESTRICTED
SFC WINDS (DIR & KTS)	NE 10-15	SE 10-15	E 10-15	E 10-15 GUST 20	E 10-15 GUST 20	NE 15-20 GUST 25	N 15-20 GUST 30	N 15-20 GUST 30
SFC MAX/MIN (°C)	8 / 6				6 / 3			
SST RANGE (°C)	8 / 6				6 / 3			
SEAS (DIR & FT)	NE 7-9	NE 7-9	NE 7-9	NE 6-8	NE 6-8	NE 6-8	NE 6-8	E 6-8
ICE ACCRETION	NIL	NIL	NIL	NIL	NIL	NIL	NIL	NIL