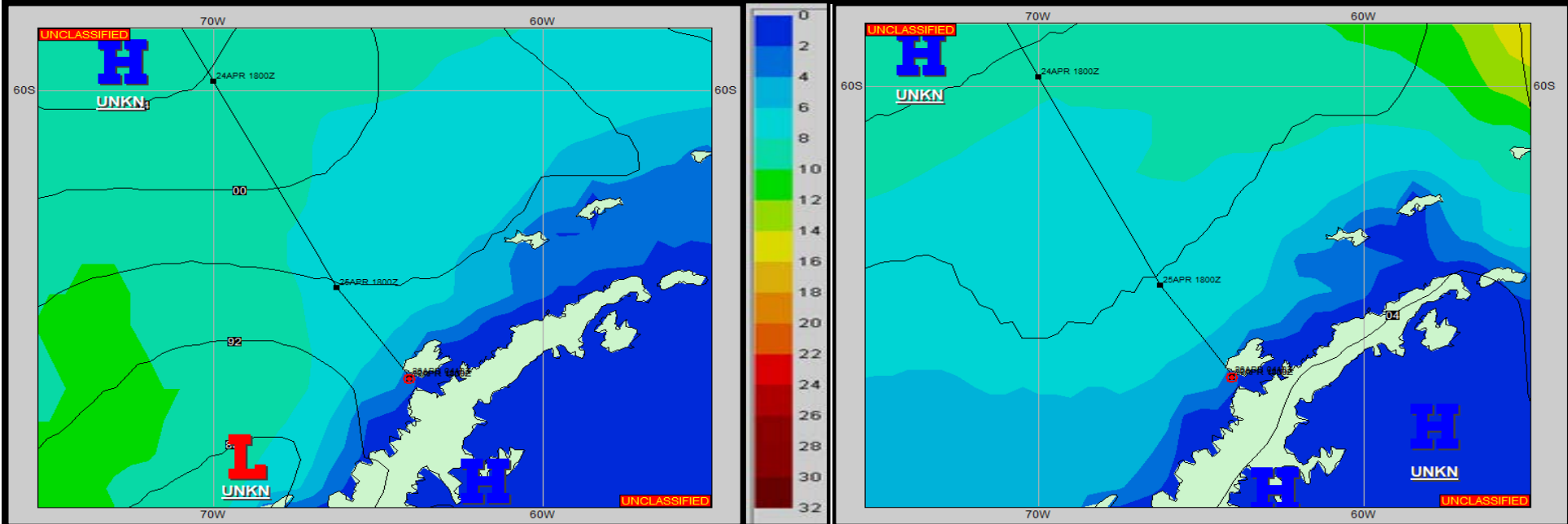


**SURFACE ANALYSIS 27-Apr-2022 18Z**

Seas (FT)

**SURFACE FORECAST 29-Apr-2022 06Z**



**METSIT 18Z 27-Apr** Initially gusty winds begin to dissipate today, snow ends and a period of fair weather begins as the current low center moves off to the northeast, a ridge builds in from the northwest and high pressure dominates the area. This is my final forecast unless otherwise required. See Palmer Daily for forecast information while in port.

**FORECASTER NOTES** Winds may differ from those forecast due to funneling/sheltering effects of islands.

VALID TIME	28-Apr 00Z	28-Apr 06Z	28-Apr 12Z	28-Apr 18Z	29-Apr 00Z	29-Apr 06Z	29-Apr 12Z	29-Apr 18Z
SKY CONDITION	CLOUDY	CLOUDY	MOSTLY CLOUDY	PARTLY CLOUDY	PARTLY CLOUDY	PARTLY CLOUDY	PARTLY CLOUDY	PARTLY CLOUDY
WEATHER	SNOW & FOG	SNOW & FOG	SNOW & FOG	NONE	NONE	NONE	NONE	NONE
VISIBILITY (NM)	1 - 3	1 - 3	4 - 6	UNRESTRICTED	UNRESTRICTED	UNRESTRICTED	UNRESTRICTED	UNRESTRICTED
SFC WINDS (DIR & KTS)	N-NE 10-15 GUST 25	SE 20-25 GUST 30	SE 10-15 GUST 30	NE 15-20	NE 8-12	NE 8-12	N-NE 8-12	NW 8-12
SFC MAX/MIN (°C)	-2 / -5				-1 / -4			
SST RANGE (°C)	0 / -1				0 / -1			
SEAS (DIR & FT)	CNSFD 1-3	CNSFD 1-3	CNSFD 1-3	CNSFD 1-3	CNSFD 1-3	CNSFD 1-3	CNSFD 1-3	CNSFD 1-3
ICE ACCRETION	LIGHT	LIGHT	LIGHT	LIGHT	LIGHT	LIGHT	LIGHT	LIGHT