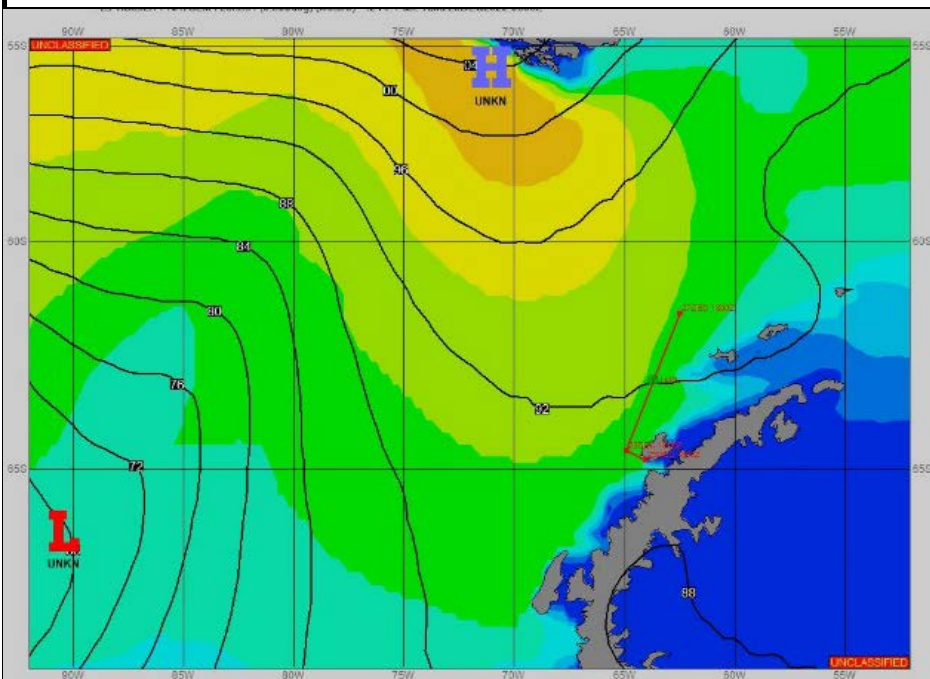
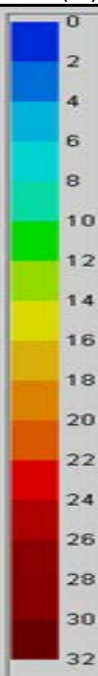


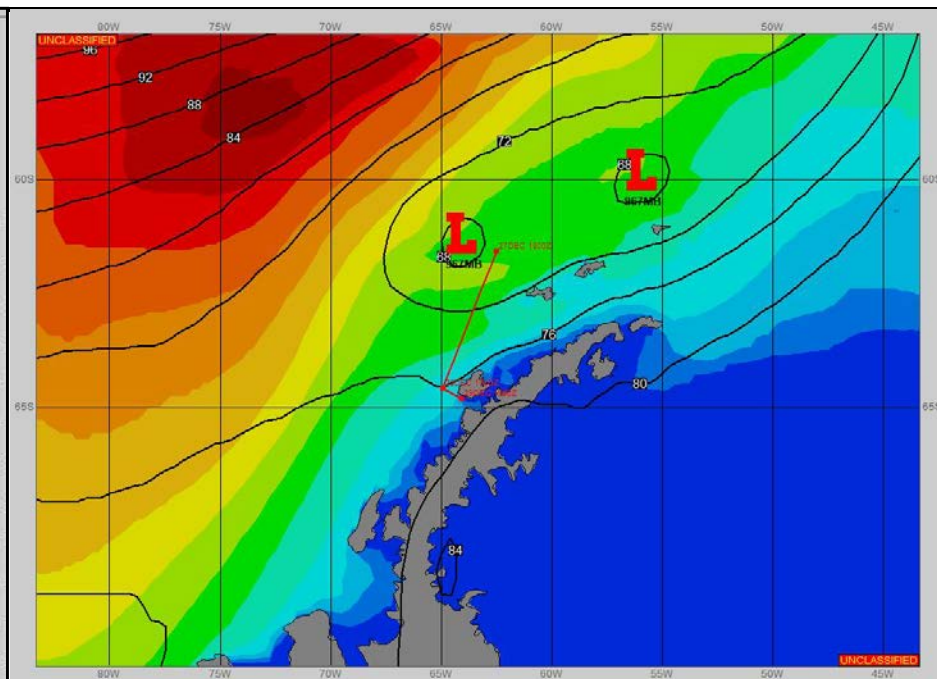
SURFACE ANALYSIS 28-Dec-2022 06Z



Seas (FT)



SURFACE FORECAST 29-Dec-2022 18Z



METSIT 06Z 28-Dec HIGH PRESSURE RIDGE OVER THE SHIP POSITION TO SLIDE EAST INTO THE WEDDELL SEA. THIS RIDGING INTO THE WEDDELL SEA SHOULD STEER MAIN THRUST OF LOW PRESSURE MOVING IN FROM THE BELLINGSHAUSEN SEA TO THE NORTHEAST THROUGH DRAKE'S PASSAGE. EXPECT NORTHEAST WINDS TO START INCREASING TO 25-35 KNOTS FROM APPROXIMATELY 28/1800Z THROUGH 29/0900Z AS THE LOW TRACKS TO THE WEST. VISIBILITY MAY BE REDUCED BRIEFLY IN THE OCCASIONAL RAIN SHOWER FROM APPROXIMATELY 29/0600Z THROUGH 29/1200Z WITH WARMING TEMPERATURES.

FORECASTER NOTES

VALID TIME	28-Dec 12Z	28-Dec 18Z	29-Dec 00Z	29-Dec 06Z	29-Dec 12Z	29-Dec 18Z	30-Dec 00Z	30-Dec 06Z
SKY CONDITION	CLOUDY	CLOUDY	CLOUDY	CLOUDY	CLOUDY	MOSTLY CLOUDY		
WEATHER	NONE	NONE	NONE	NONE	NONE	NONE	PALMER STATION	PALMER STATION
VISIBILITY (NM)	UNRESTRICTED	UNRESTRICTED	UNRESTRICTED	UNRESTRICTED	UNRESTRICTED	UNRESTRICTED		
SFC WINDS (DIR & KTS)	NW 5-10	NE 20-25	NE 25-30 GUST 35	NE 25-30 GUST 35	E-NE 15-20	E 10-15		
SFC MAX/MIN (°C)	3 / 1			3 / 1				
SST RANGE (°C)	2 / 1			2 / 1				
SEAS (DIR & FT)	W 10-13	W 9-12	NW 8-10	NW 6-8	NW 5-7	NW 2-4		
ICE ACCRETION	NIL	NIL	NIL	NIL	NIL	NIL		