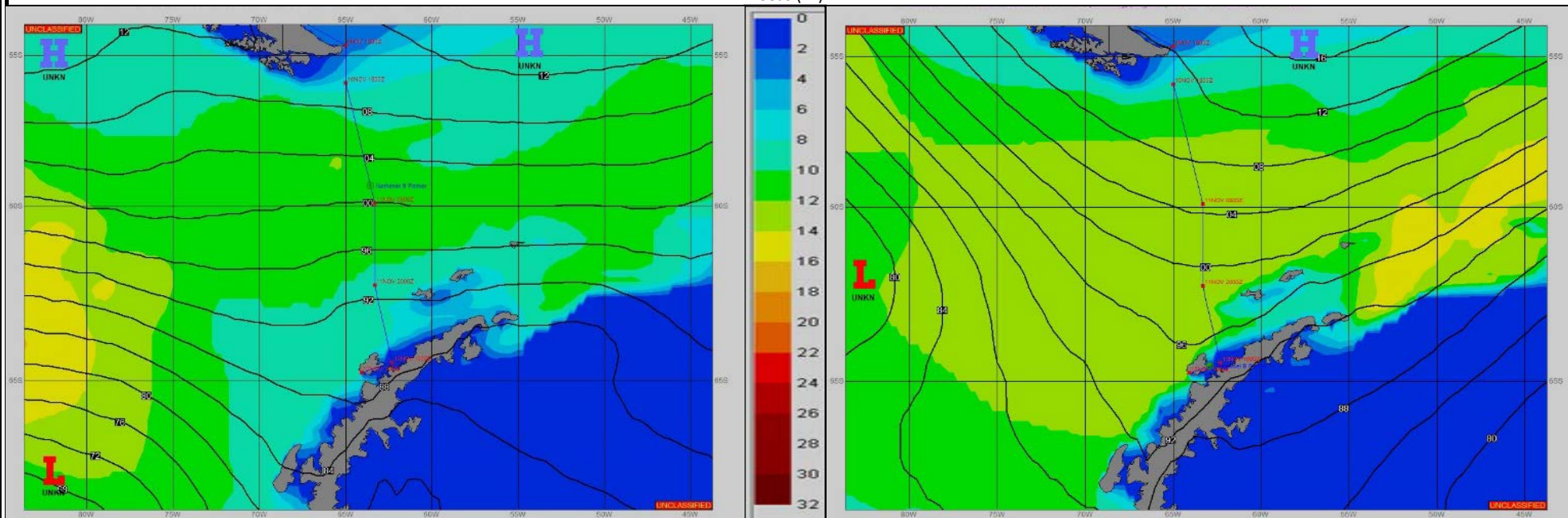


**SURFACE ANALYSIS 11-Nov-2022 06Z**

Seas (FT)

**SURFACE FORECAST 12-Nov-2022 18Z**



**METSIT 06Z 11-Nov** ZONAL WESTERLY FLOW CONTINUES THROUGH DRAKE'S PASSAGE BETWEEN HIGH PRESSURE IN THE SOUTH ATLANTIC/SOUTH PACIFIC AND LOW PRESSURE IN THE BELLINGSHAUSEN SEA. EXPECT PERIODS OF REDUCED VISIBILITY IN FOG, SNOW AND MIXED PRECIPITATION, AND PERIODS OF WINDS GUSTING NEAR 50. CONDITIONS SHOULD IMPROVE FROM APPROXIMATELY 12/0900Z THROUGH 13/0000Z AS A TRANSIENT RIDGE OF HIGH PRESSURE MOVES WEST TO EAST ACROSS THE SHIP POSITION. NEAR THE END OF THE FORECAST PERIOD, ANOTHER FRONTAL COMPLEX PUSHES INTO THE AREA FROM THE WEST.

**FORECASTER NOTES** LIMITED DATA WAS AVAILABLE FROM FNMOC. SEA SURFACE TEMPERATURES ARE ESTIMATED.

VALID TIME	11-Nov 12Z	11-Nov 18Z	12-Nov 00Z	12-Nov 06Z	12-Nov 12Z	12-Nov 18Z	13-Nov 00Z	13-Nov 06Z
SKY CONDITION	CLOUDY	CLOUDY	CLOUDY	CLOUDY	MOSTLY CLOUDY	MOSTLY CLOUDY	CLOUDY	CLOUDY
WEATHER	FOG	MIXED & FOG	FOG	FOG	NONE	NONE	SNOW	SNOW & FOG
VISIBILITY (NM)	1/2 - 1	1-3	4 - 6	4 - 6	UNRESTRICTED	UNRESTRICTED	4 - 6	1 - 3
SFC WINDS (DIR & KTS)	W 20-25 GUST 30	WNW 30-40 GUST 50	WSW 20-25 GUST 30	WSW 20-25 GUST 30	NW 20-25	N 10-15	NW 15-20 GUST 30	N 35-45 GUST 60
SFC MAX/MIN (°C)	2/-2				0/-3			
SST RANGE (°C)	1/0				0/-1			
SEAS (DIR & FT)	W 8-11	W 9-12	W 10-13	W 9-12	NW 1-3	NW 1-3	NW 1-3	W 8-10
ICE ACCRETION	NIL	NIL	NIL	NIL	NIL	NIL	LIGHT	LIGHT