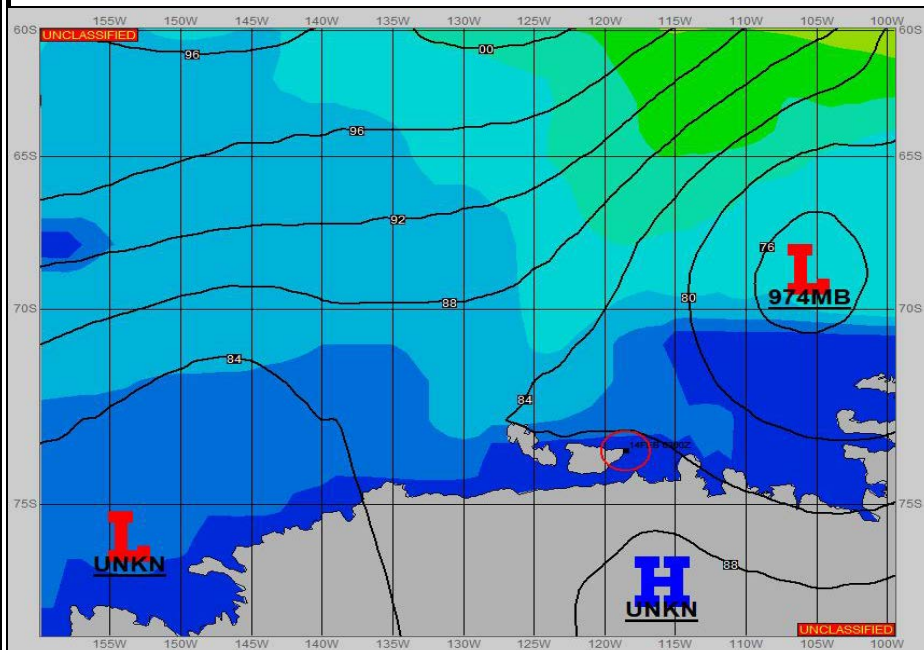
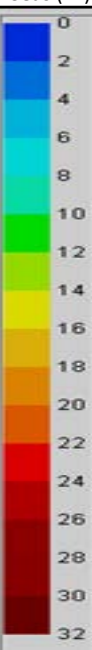


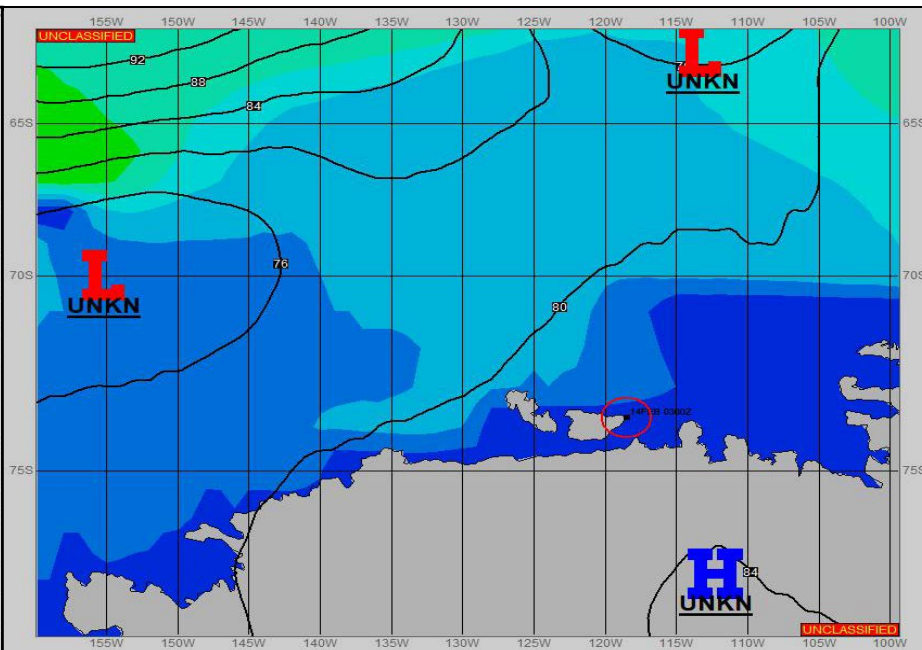
SURFACE ANALYSIS 14-Feb-2022 06Z



Seas (FT)



SURFACE FORECAST 15-Feb-2022 18Z



METSIT 06Z 14-Feb 974MB LOW NEAR 69S 105W IS FILLING AND MOVING NORTH-NORTHEAST. PRESSURE GRADIENT WILL CONTINUE TO LOOSEN TAKING WINDS TO NEAR CALM CONDITIONS. VISIBILITY WILL REMAIN GOOD WITH A FEW MORE CLOUDS AND TEMPS WILL COOL UNDER CONTINENTAL AIR.

FORECASTER NOTES

VALID TIME	14-Feb 12Z	14-Feb 18Z	15-Feb 00Z	15-Feb 06Z	15-Feb 12Z	15-Feb 18Z	16-Feb 00Z	16-Feb 06Z
SKY CONDITION	PARTLY CLOUDY	PARTLY CLOUDY	PARTLY CLOUDY	PARTLY CLOUDY	MOSTLY CLOUDY	MOSTLY CLOUDY	MOSTLY CLOUDY	MOSTLY CLOUDY
WEATHER	NONE	NONE	NONE	NONE	NONE	NONE	NONE	NONE
VISIBILITY (NM)	UNRESTRICTED	UNRESTRICTED	UNRESTRICTED	UNRESTRICTED	UNRESTRICTED	UNRESTRICTED	UNRESTRICTED	UNRESTRICTED
SFC WINDS (DIR & KTS)	SE 10-15	SE 5-10	SE 5-10	SE 5	S 5	S 5	S 5	S 5
SFC MAX/MIN (°C)	-2/-4				-4/-7			
SST RANGE (°C)	-1/-1.5				-1/-1.5			
SEAS (DIR & FT)	N 0-2	N 0-2	N 0-2	N 0-2	N 0-2	N 0-2	N 0-2	N 0-2
ICE ACCRETION	LIGHT	LIGHT	LIGHT	LIGHT	LIGHT	LIGHT	LIGHT	LIGHT