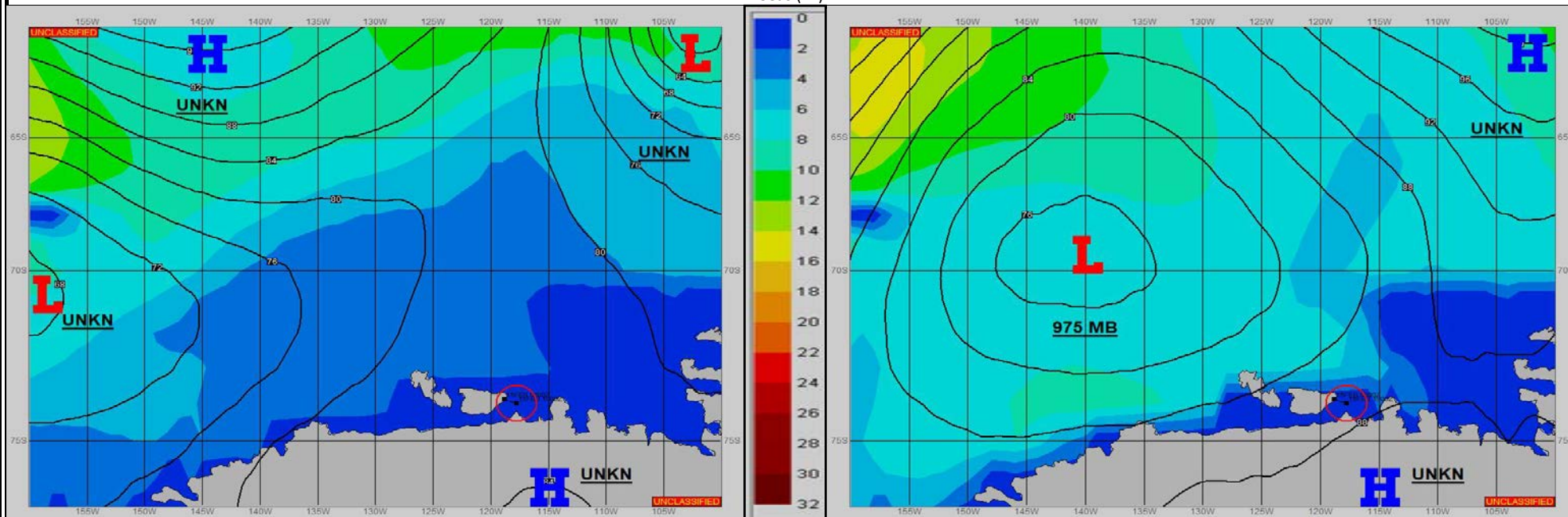


SURFACE ANALYSIS 16-Feb-2022 06Z

Seas (FT)

SURFACE FORECAST 17-Feb-2022 18Z



METSIT 06Z 16-Feb MILD CONDITIONS UNDER HIGH PRESSURE CONTINUE EARLY ON, WITH A LOOSE PRESSURE GRADIENT AND COOL CONTINENTAL AIR THAT SHIFTS FROM SOUTHWEST TO SOUTHEAST BY 17/00Z TIMEFRAME. LOW PRESSURE DEEPENS AS IT APPROACHES FROM THE WEST, WITH INCREASING CLOUDINESS AND PRECIPITATION EXPECTED FROM 17/06Z THROUGH 18/00Z.

FORECASTER NOTES

VALID TIME	16-Feb 12Z	16-Feb 18Z	17-Feb 00Z	17-Feb 06Z	17-Feb 12Z	17-Feb 18Z	18-Feb 00Z	18-Feb 06Z
SKY CONDITION	PARTLY CLOUDY	PARTLY CLOUDY	MOSTLY CLOUDY	MOSTLY CLOUDY	MOSTLY CLOUDY	CLOUDY	MOSTLY CLOUDY	MOSTLY CLOUDY
WEATHER	NONE	NONE	NONE	SNOW	SNOW & FOG	SNOW & FOG	VCNTY SNOW	NONE
VISIBILITY (NM)	UNRESTRICTED	UNRESTRICTED	UNRESTRICTED	3 - 5	2 - 4	3 - 5	UNRESTRICTED	UNRESTRICTED
SFC WINDS (DIR & KTS)	SW 3-6	SW 3-6	SE-S 3-6	SE 3-6	SE 5-10	SE 6-12	SE 6-12	SE 5-10
SFC MAX/MIN (°C)	-5 / -9				-6 / -9			
SST RANGE (°C)	0 / -1.0				0 / -1.5			
SEAS (DIR & FT)	S 0-2	S 0-2	S 0-2	S 0-2	S 0-2	S 0-2	S 0-2	S 0-2
ICE ACCRETION	LIGHT	LIGHT	LIGHT	LIGHT	LIGHT	LIGHT	LIGHT	LIGHT