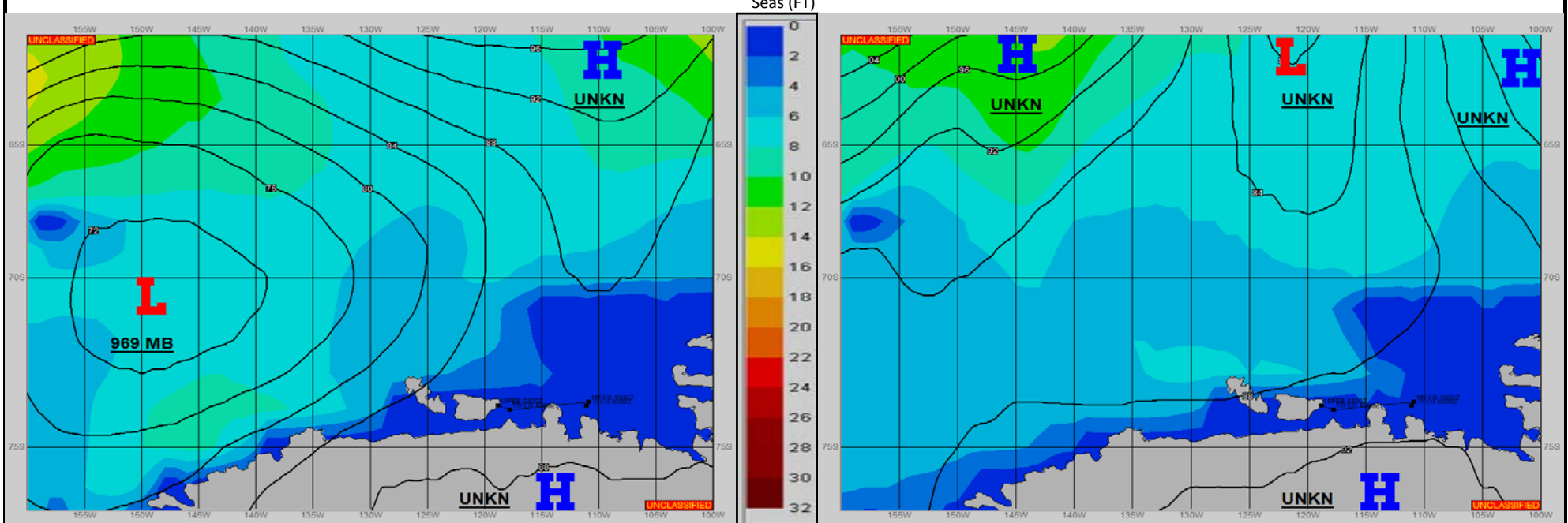


SURFACE ANALYSIS 17-Feb-2022 06Z

SURFACE FORECAST 18-Feb-2022 18Z



METSIT 06Z 17-Feb BRIEF PERIODS OF LIGHT SNOW EARLY ON AS A SLOWLY FILLING 969MB LOW APPROACHES FROM THE WEST-NORTHWEST THROUGHOUT THE FIRST HALF OF THE PERIOD. AS THE LOW GETS CLOSER, IT SWINGS TO THE NORTH, KEEPING THE PRECIPITATION BAND AWAY FROM YOUR OPAREA, WHICH WILL IN TURN KEEP CONDITIONS FAVORABLE FOR THE REMAINDER OF THE PERIOD. WINDS REMAIN VERY LIGHT THROUGH THE FIRST HALF OF THE PERIOD, BECOMING AN EAST-SOUTHEASTERLY FLOW AND SLOWLY INCREASING IN SPEEDS THROUGH THE SECOND HALF OF THE PERIOD. SEAS REMAIN WORKABLE THROUGHOUT.

FORECASTER NOTES

VALID TIME	17-Feb 12Z	17-Feb 18Z	18-Feb 00Z	18-Feb 06Z	18-Feb 12Z	18-Feb 18Z	19-Feb 00Z	19-Feb 06Z
SKY CONDITION	CLOUDY	MOSTLY CLOUDY	MOSTLY CLOUDY	MOSTLY CLOUDY	MOSTLY CLOUDY	PARTLY CLOUDY	MOSTLY CLOUDY	MOSTLY CLOUDY
WEATHER	SNOW	SNOW	NONE	NONE	NONE	NONE	NONE	NONE
VISIBILITY (NM)	2 - 4	3 - 5	UNRESTRICTED	UNRESTRICTED	UNRESTRICTED	UNRESTRICTED	UNRESTRICTED	UNRESTRICTED
SFC WINDS (DIR & KTS)	LGT / VRB	LGT / VRB	LGT / VRB	NE-E 2-6	E 5-10	E-SE 8-12	E-SE 8-12	SE 10-15
SFC MAX/MIN (°C)	-2 / -5				-4 / -6			
SST RANGE (°C)	-1 / -1.5				0 / -1.5			
SEAS (DIR & FT)	NW 1-2	NW 1-2	NW 1-2	NW 1-2	NW 1-2	NW 1-2	NW 1-2	NW 1-2
ICE ACCRETION	LIGHT	LIGHT	LIGHT	LIGHT	LIGHT	LIGHT	LIGHT	LIGHT