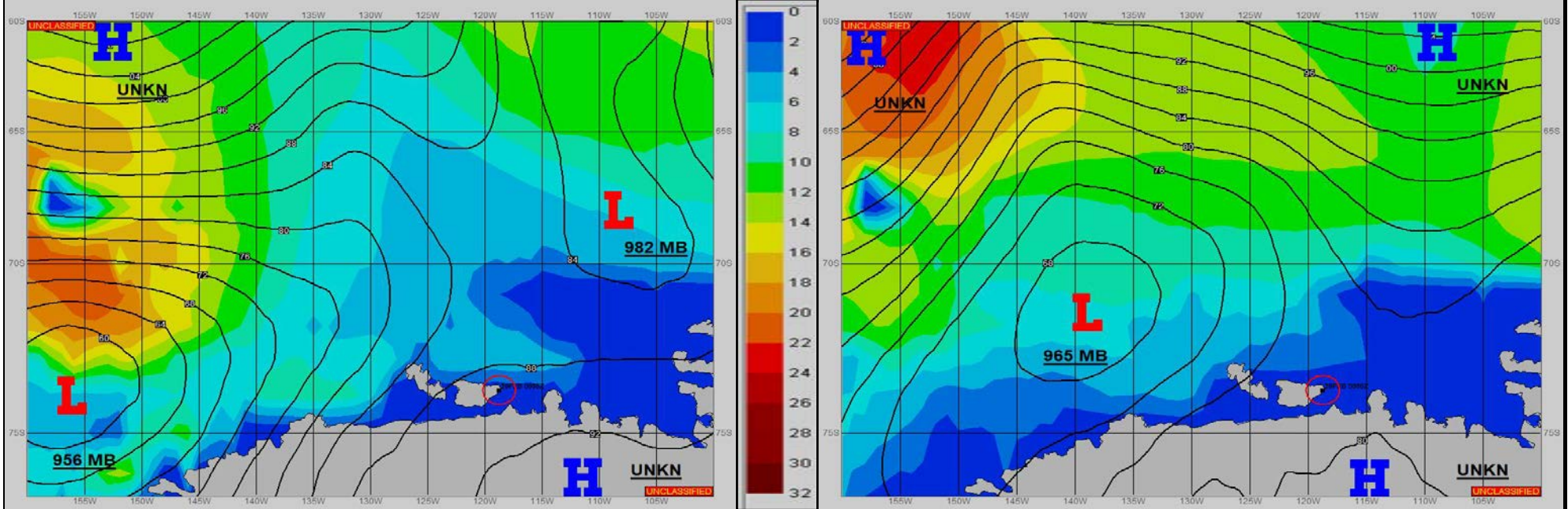


SURFACE ANALYSIS 20-Feb-2022 06Z

Seas (FT)

SURFACE FORECAST 21-Feb-2022 18Z



METSIT 06Z 20-Feb 956MB LOW NEAR 74S 157W IS SLOWLY FILLING AS IT MOVES EVER SO SLOWLY EASTWARD, WITH AN ASSOCIATED FRONTAL BOUNDARY OUT AHEAD OF IT WHICH WILL BRING REDUCED VISIBILITY IN SNOW AND FOG THROUGH THE FIRST HALF OF THE PERIOD. WINDS WILL REMAIN RELATIVELY LIGHT THROUGH MOST OF THE PERIOD, SLOWLY INCREASING IN SPEEDS NEAR END OF PERIOD. CONDITIONS IMPROVE DRAMATICALLY AFTER 21/10Z, AS THE FRONTAL BOUNDARY MOVES AWAY. SNOW AND FOG BECOME A FACTOR ONCE AGAIN AFTER 22/00Z AS THE LOW BECOMES SITUATED JUST TO THE NORTH-NORTHWEST OF YOUR OPAREA, WITH WINDS SHIFTING TO THE EAST-SOUTHEAST AND INCREASING SPEEDS.

FORECASTER NOTES

VALID TIME	20-Feb 12Z	20-Feb 18Z	21-Feb 00Z	21-Feb 06Z	21-Feb 12Z	21-Feb 18Z	22-Feb 00Z	22-Feb 06Z
SKY CONDITION	CLOUDY	CLOUDY	CLOUDY	CLOUDY	CLOUDY	CLOUDY	CLOUDY	CLOUDY
WEATHER	SNOW & FOG	SNOW & FOG	SNOW & FOG	SNOW & FOG	NONE	NONE	SNOW & FOG	SNOW & FOG
VISIBILITY (NM)	1 - 3	1/2 - 1	1/2 - 2	4 - 6	UNRESTRICTED	UNRESTRICTED	1 - 3	1/2 - 1
SFC WINDS (DIR & KTS)	E-SE 5-15	E-SE 6-12	SE 4-8	SE-S 2-6	LGT / VRB	NE-E 5-10	E 10-18	E-SE 10-20
SFC MAX/MIN (°C)	-5 / -8				-5 / -8			
SST RANGE (°C)	-1/-1.5				-1/-1.5			
SEAS (DIR & FT)	NIL	NIL	NIL	NIL	NIL	NIL	NIL	NIL
ICE ACCRETION	LIGHT	LIGHT	LIGHT	LIGHT	LIGHT	LIGHT	LIGHT	LIGHT