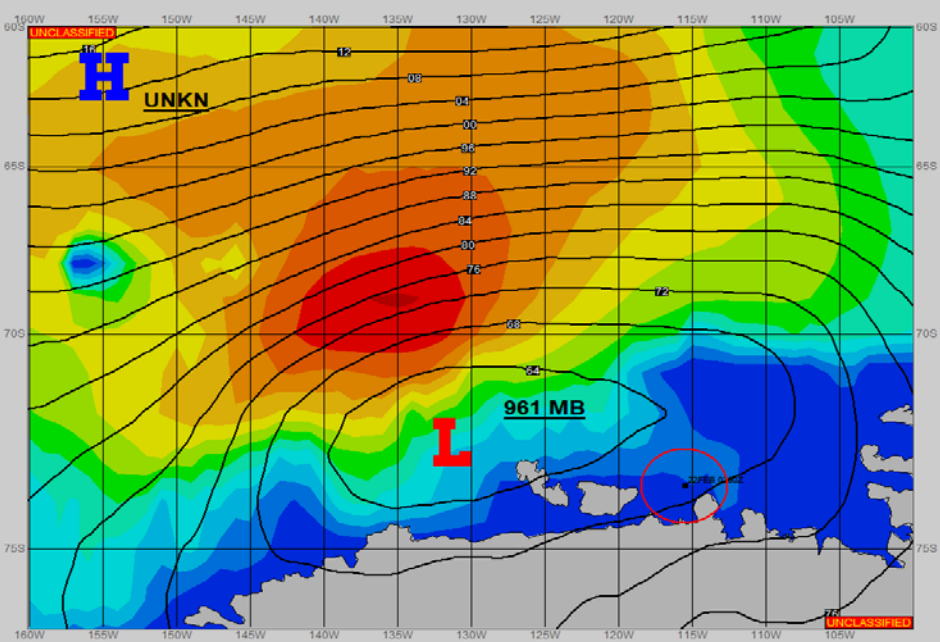
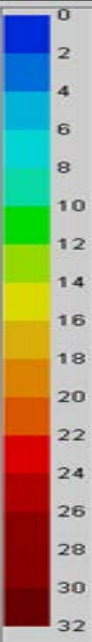
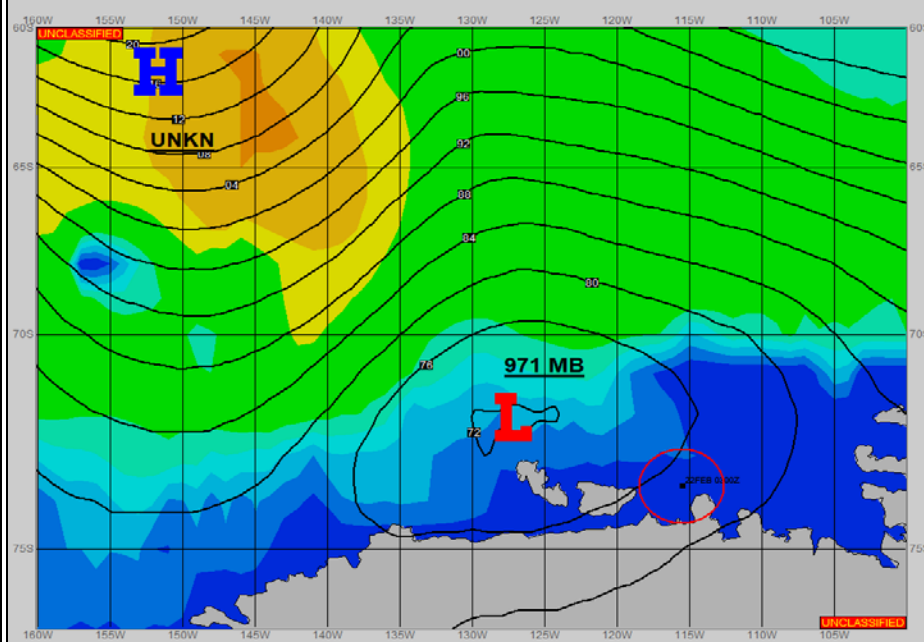


**SURFACE ANALYSIS 22-Feb-2022 06Z**

Seas (FT)

**SURFACE FORECAST 23-Feb-2022 18Z**



**METSIT 06Z 22-Feb** A SERIES OF LOWS TRANSIT THROUGH REMAINING JUST NORTH OF YOUR OPAREA, BUT WILL KEEP CLOUDY SKIES AND PERIODS OF REDUCED VISIBILITY IN SNOW AND FOG IN THE FORECAST THROUGHOUT MOST OF THE PERIOD. A BRIEF IMPROVEMENT OCCURS BETWEEN 23/00Z AND 23/12Z AS THE FIRST LOW MOVES OFF TO THE EAST AS THE SECOND AND SLIGHTLY DEEPER LOW APPROACHES FROM THE WEST. WINDS REMAIN A STEADY SOUTHEASTERLY FLOW THROUGHOUT, IN THE 10-20 KNOT RANGE, AND SEAS REMAIN WORKABLE IN THE 1-2 FOOT RANGE.

**FORECASTER NOTES**

VALID TIME	22-Feb 12Z	22-Feb 18Z	23-Feb 00Z	23-Feb 06Z	23-Feb 12Z	23-Feb 18Z	24-Feb 00Z	24-Feb 06Z
SKY CONDITION	CLOUDY	CLOUDY	CLOUDY	CLOUDY	CLOUDY	CLOUDY	CLOUDY	CLOUDY
WEATHER	SNOW & FOG	SNOW & FOG	NONE	NONE	SNOW & FOG	SNOW & FOG	SNOW & FOG	SNOW & FOG
VISIBILITY (NM)	1 - 3	3 - 5	UNRESTRICTED	UNRESTRICTED	1/4 - 1	1 - 3	2 - 4	3 - 5
SFC WINDS (DIR & KTS)	SE 10-18	SE 10-18	SE 5-15	E 3-8	E-SE 5-15	SE 12-18	SE 10-20	SE 10-20
SFC MAX/MIN (°C)	-2 / -7				-2 / -7			
SST RANGE (°C)	-1.0 / -1.5				-1.0 / -1.5			
SEAS (DIR & FT)	NW 0-1	NW 0-1	NW 0-1	NW 0-1	NW 1-2	N 1-2	N 1-2	NW 1-2
ICE ACCRETION	LIGHT	LIGHT	LIGHT	LIGHT	LIGHT	LIGHT	LIGHT	LIGHT