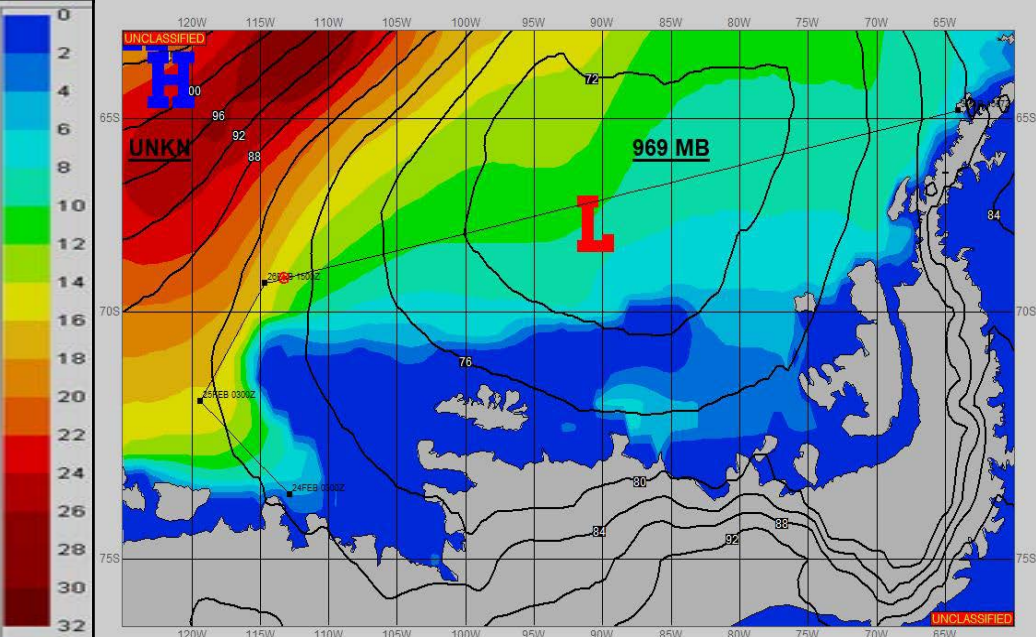
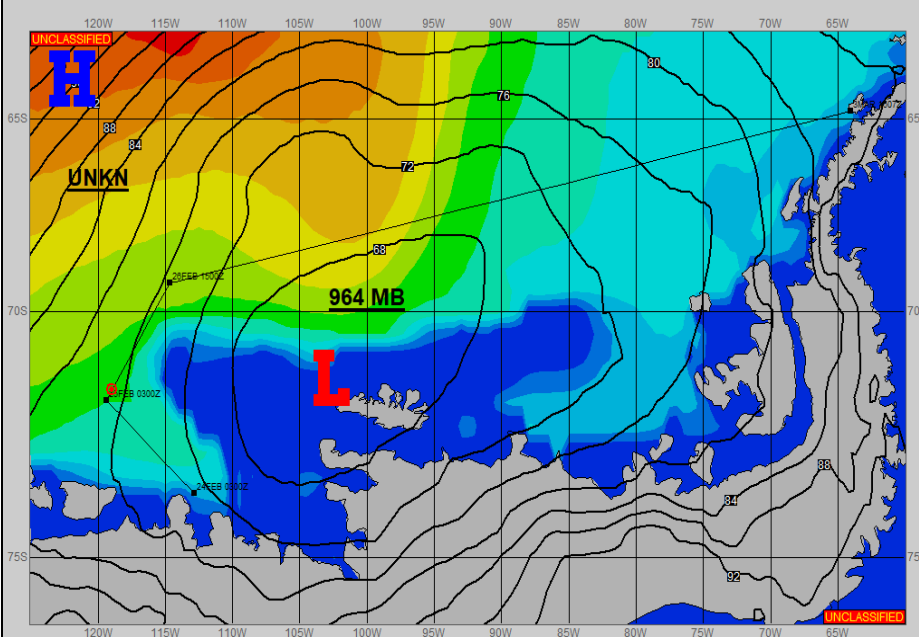


SURFACE ANALYSIS 25-Feb-2022 06Z

Seas (FT)

SURFACE FORECAST 26-Feb-2022 18Z



METSIT 06Z 25-Feb 964MB LOW NEAR 71S 104W CONTINUES TO FILL AND MOVE EAST-NORTHEAST. HIGH PRESSURE RIDGE BUILDS IN FROM THE WEST THROUGH 25/1800Z WITH REDUCED VISIBILITY EXPECTED IN FOG. BY 26/00Z, A FRONTAL BOUNDARY MOVES IN OVER YOUR TRACK, ASSOCIATED WITH A LOW FURTHER OUT TO THE WEST, THAT BRINGS INCREASING WINDS AND A GOOD SHOT OF SNOW THROUGH 26/16Z, WITH IMPROVING CONDITIONS THROUGH END OF PERIOD AS THAT LOW MOVES OFF TO THE EAST.

FORECASTER NOTES

VALID TIME	25-Feb 12Z	25-Feb 18Z	26-Feb 00Z	26-Feb 06Z	26-Feb 12Z	26-Feb 18Z	27-Feb 00Z	27-Feb 06Z
SKY CONDITION	CLOUDY	CLOUDY	CLOUDY	CLOUDY	CLOUDY	CLOUDY	CLOUDY	CLOUDY
WEATHER	FOG	FOG	SNOW & FOG	SNOW & FOG	SNOW	NONE	NONE	NONE
VISIBILITY (NM)	3 - 5	2 - 4	1 - 3	2 - 4	4 - 6	UNRESTRICTED	UNRESTRICTED	UNRESTRICTED
SFC WINDS (DIR & KTS)	SW 15-25	W-NW 10-20	W-NW 15-25	SW 12-20	SW 15-25	S-SW 20-30	S-SW 20-28	SW 15-25
SFC MAX/MIN (°C)	0 / -3				-1 / -3			
SST RANGE (°C)	0 / -1.0				0.5 / -1.0			
SEAS (DIR & FT)	W 9-13	W 10-14	W 11-15	W 10-14	W 11-15	W 12-16	W 14-18	W 12-16
ICE ACCRETION	LIGHT	LIGHT	LIGHT	LIGHT	LIGHT	LIGHT	LIGHT	LIGHT