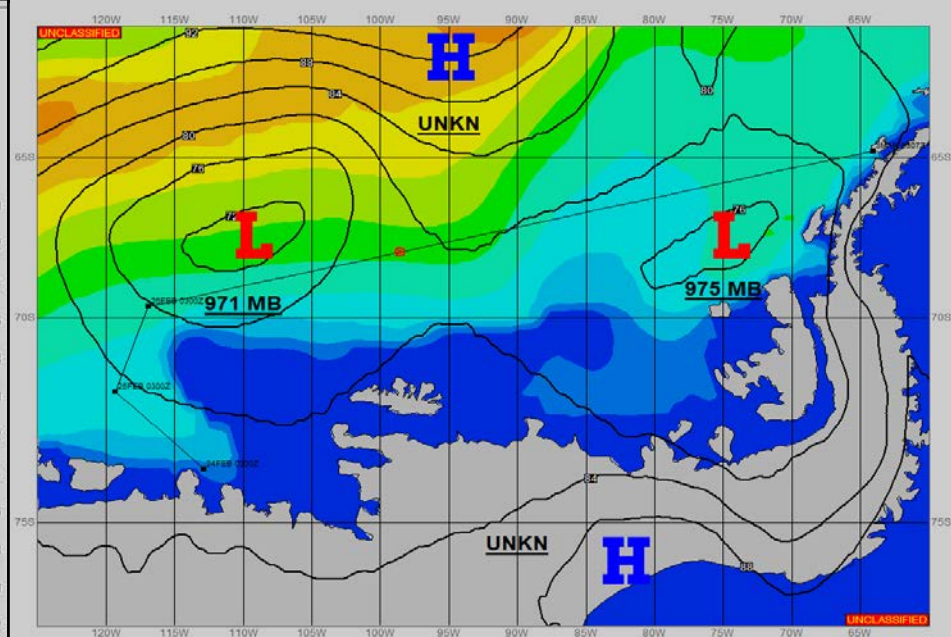
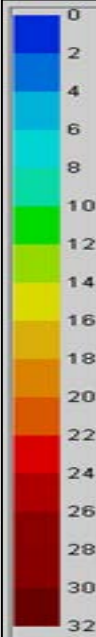
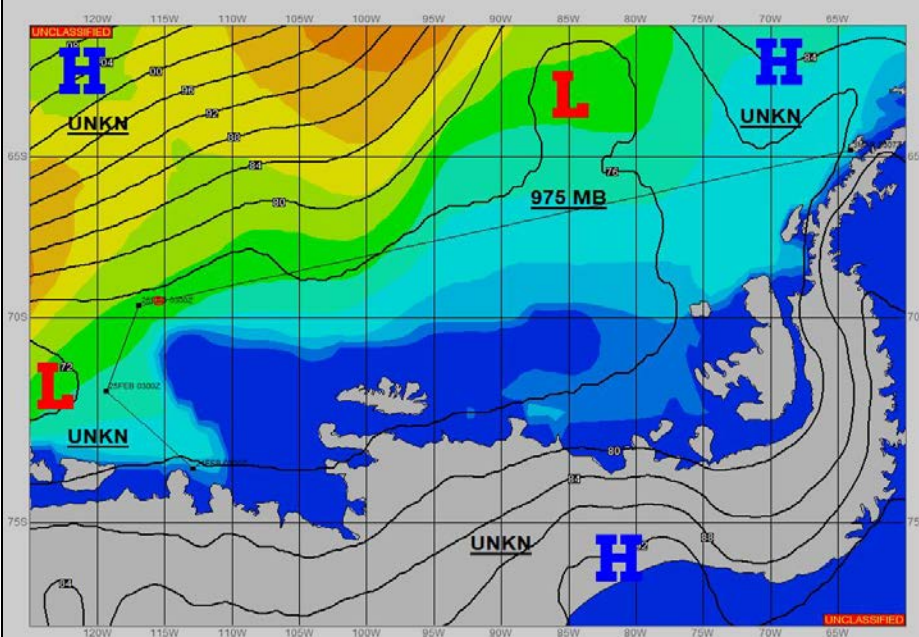


SURFACE ANALYSIS 26-Feb-2022 06Z

Seas (FT)

SURFACE FORECAST 27-Feb-2022 18Z



METSIT 06Z 26-Feb AN AREA OF LOW PRESSURE STRETCHES OUT WEST-SOUTHWEST TO EAST-NORTHEAST ALONG YOUR TRACK WITH A 971MB LOW DEVELOPING NEAR 69S 095W AT 26/12Z WHICH STAYS OUT AHEAD OF YOUR TRACK THROUGH 27/00Z. A RIDGE OF HIGH PRESSURE BUILDS DOWN OVER YOUR TRACK FROM THE NORTHWEST AFTER 27/03Z, WITH THE POSSIBILITY OF FOG MOVING IN OVER YOUR TRACK. BY 27/15Z, A 971MB LOW WILL BE SITUATED NEAR 68S 115W THAT WILL MOVE JUST NORTH OF YOUR TRACK BY END OF PERIOD. OVERALL, CLOUDY SKIES PREVAIL WITH SOMEWHAT BRISK SOUTHWESTERLY WINDS EARLY ON THAT SLOWLY DIMINISH THROUGHOUT THE PERIOD.

FORECASTER NOTES

VALID TIME	26-Feb 12Z	26-Feb 18Z	27-Feb 00Z	27-Feb 06Z	27-Feb 12Z	27-Feb 18Z	28-Feb 00Z	28-Feb 06Z
SKY CONDITION	CLOUDY	CLOUDY	CLOUDY	CLOUDY	CLOUDY	CLOUDY	CLOUDY	CLOUDY
WEATHER	NONE	NONE	POSSIBLE FOG	POSSIBLE FOG	POSSIBLE FOG	NONE	NONE	NONE
VISIBILITY (NM)	UNRESTRICTED	UNRESTRICTED	UNRESTRICTED	UNRESTRICTED	UNRESTRICTED	UNRESTRICTED	UNRESTRICTED	UNRESTRICTED
SFC WINDS (DIR & KTS)	SW 15-25	S-SW 15-25	SW 10-20	SW 5-15	W-NW 5-10	N-NE 4-8	NE-E 5-10	E-SE 5-10
SFC MAX/MIN (°C)	-1 / -3				-1 / -3			
SST RANGE (°C)	0 / -1.0				1.0 / 0			
SEAS (DIR & FT)	W 3-5	W 3-5	W 4-6	W 5-7	W 4-6	W 3-5	W 2-4	W 2-4
ICE ACCRETION	LIGHT	LIGHT	LIGHT	LIGHT	LIGHT	LIGHT	LIGHT	LIGHT