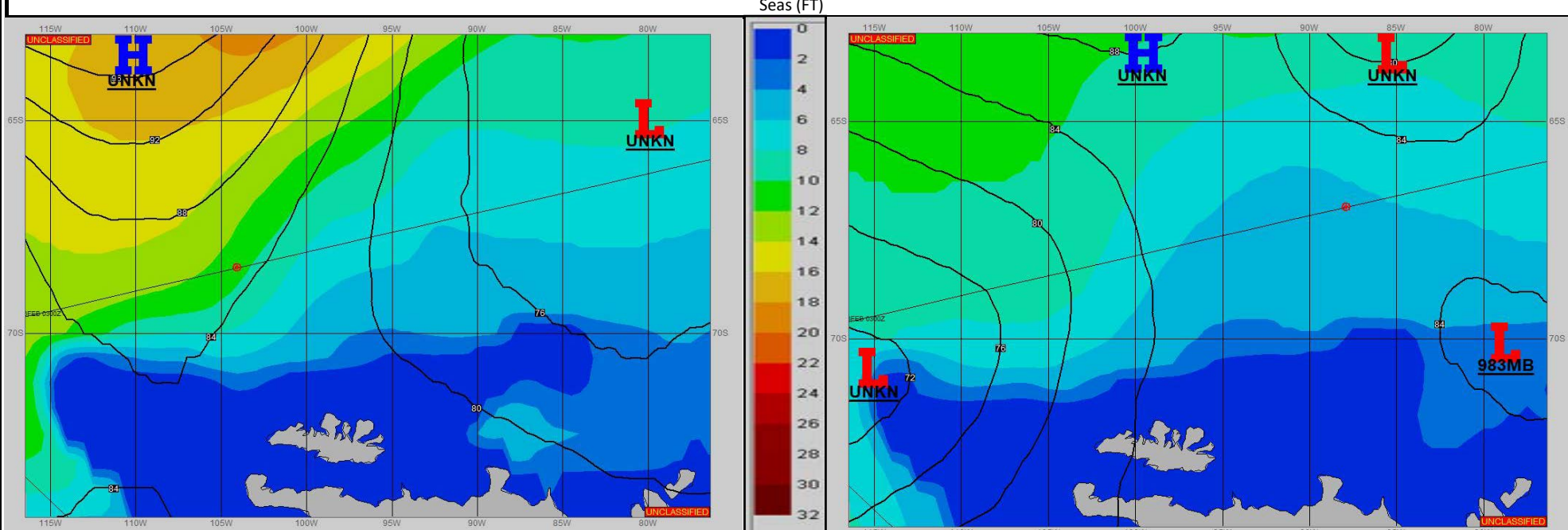


SURFACE ANALYSIS 27-Feb-2022 06Z

SURFACE FORECAST 28-Feb-2022 18Z



METSIT 06Z 27-Feb HIGH PRESSURE RIDGE AXIS NORTH-SOUTH ALONG 110W AT 27/0600Z BETWEEN FILLING LOW PRESSURE CENTERS MOVES EAST AND RECEDES NORTH. EXPECT MILD CONDITIONS WITH GENERALLY CLOUDY SKIES AND LIGHT WIND AS THE SHIP TACKS WITH THE LOOSE PRESSURE GRADIENT OF THE COL AREA BETWEEN CIRCULATIONS.

FORECASTER NOTES

VALID TIME	27-Feb 12Z	27-Feb 18Z	28-Feb 00Z	28-Feb 06Z	28-Feb 12Z	28-Feb 18Z	1-Mar 00Z	1-Mar 06Z
SKY CONDITION	CLOUDY	CLOUDY	CLOUDY	CLOUDY	CLOUDY	CLOUDY	PARTLY CLOUDY	PARTLY CLOUDY
WEATHER	NONE	NONE	NONE	NONE	NONE	NONE	NONE	NONE
VISIBILITY (NM)	UNRESTRICTED	UNRESTRICTED	UNRESTRICTED	UNRESTRICTED	UNRESTRICTED	UNRESTRICTED	UNRESTRICTED	UNRESTRICTED
SFC WINDS (DIR & KTS)	SW 5-10	NW 5	NE 5	SE 5	SE 5-10	SE 5	SW 5	NW 5
SFC MAX/MIN (°C)	-1 / -3				0 / -2			
SST RANGE (°C)	1 / 0				1 / 0			
SEAS (DIR & FT)	W 8-11	W 7-10	W 6-8	W 5-7	W 4-6	W 4-6	W 3-5	W 3-5
ICE ACCRETION	LIGHT	LIGHT	LIGHT	LIGHT	NIL	NIL	NIL	NIL