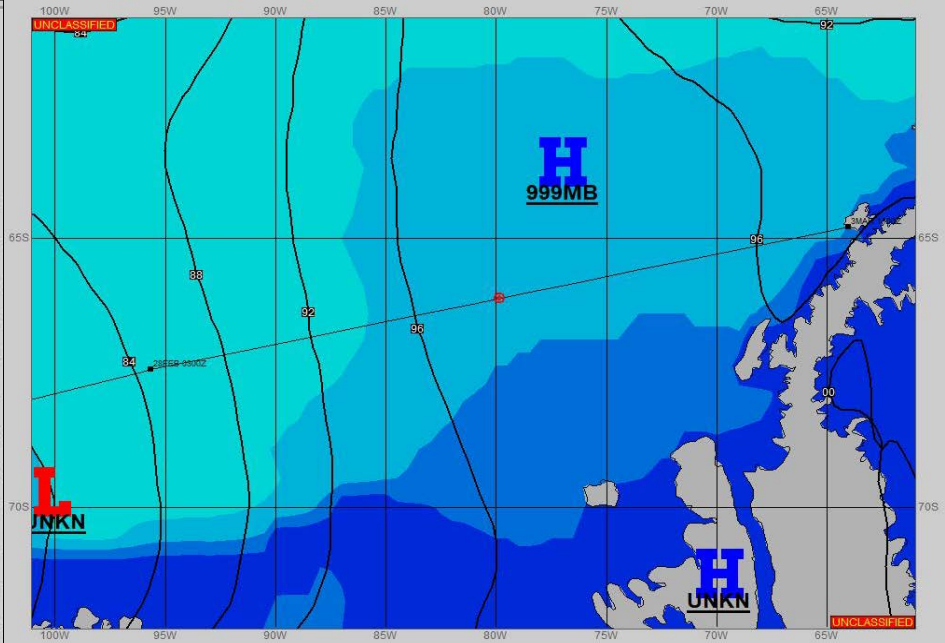
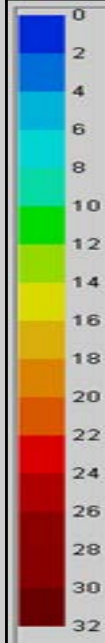
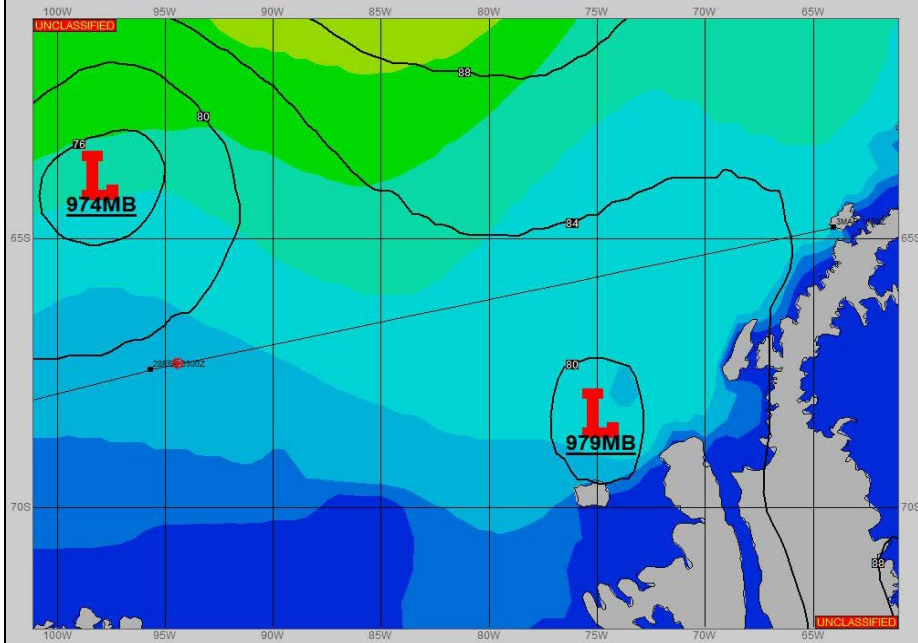


**SURFACE ANALYSIS 28-Feb-2022 06Z**

Seas (FT)

**SURFACE FORECAST 1-Mar-2022 18Z**



**METSIT 06Z 28-Feb** 974MB LOW NEAR 64S 098W FILLING AND MOVING NORTHEAST. SHIP COURSE REMAINS UNDER COL OR HIGH PRESSURE CONDITIONS, AND OUT AHEAD OF LOW PRESSURE SLOWLY ADVANCING/EXPANDING FROM WEST. EXPECT VARIABLE CLOUDS, GOOD VISIBILITY, AND GENERALLY LIGHT WIND THROUGH THE FORECAST PERIOD.

**FORECASTER NOTES**

VALID TIME	28-Feb 12Z	28-Feb 18Z	1-Mar 00Z	1-Mar 06Z	1-Mar 12Z	1-Mar 18Z	2-Mar 00Z	2-Mar 06Z
SKY CONDITION	CLOUDY	MOSTLY CLOUDY	MOSTLY CLOUDY	CLOUDY	MOSTLY CLOUDY	CLOUDY	PARTLY CLOUDY	MOSTLY CLOUDY
WEATHER	NONE	NONE	NONE	NONE	NONE	NONE	NONE	NONE
VISIBILITY (NM)	UNRESTRICTED	UNRESTRICTED	UNRESTRICTED	UNRESTRICTED	UNRESTRICTED	UNRESTRICTED	UNRESTRICTED	UNRESTRICTED
SFC WINDS (DIR & KTS)	SE 10	SE 10	SE 5	NW 5	NW 5	NW 5-10	NW 10	N 10-15
SFC MAX/MIN (°C)	0/-2				1/-2			
SST RANGE (°C)	1/0				1/0			
SEAS (DIR & FT)	W 3-5	W 3-5	W 3-5	W 2-4	W 2-4	W 2-4	W 3-5	W 3-5
ICE ACCRETION	NIL	NIL	NIL	NIL	NIL	NIL	NIL	NIL