

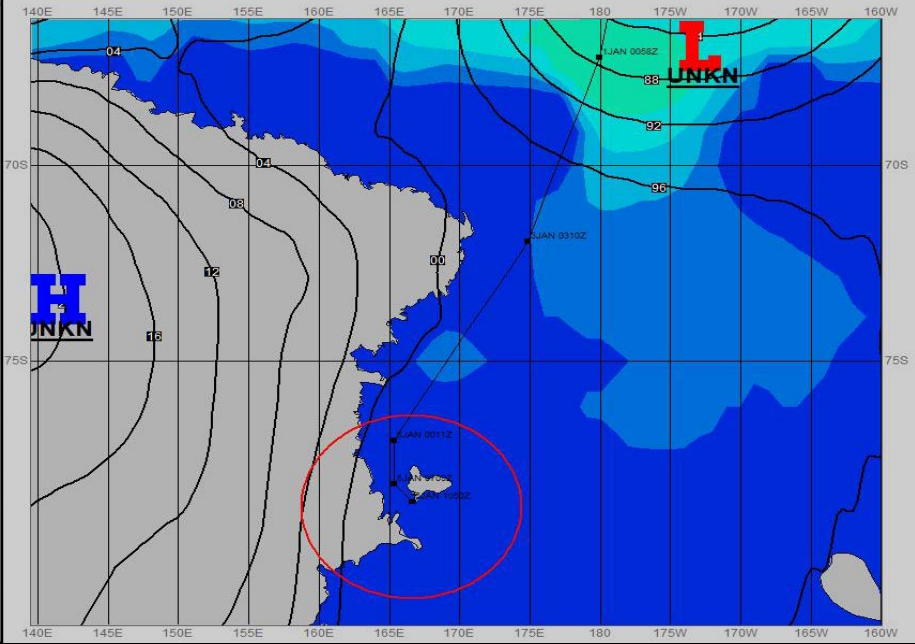
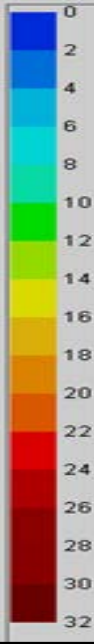
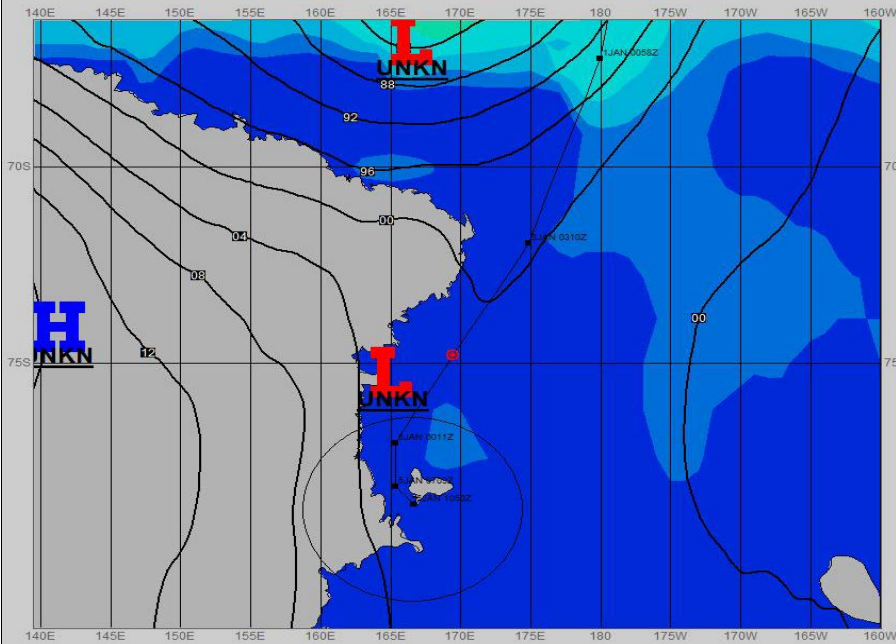
Ref A: MOVREP USCGC POLAR STAR 261432Z DEC 2021

Ref B:

**SURFACE ANALYSIS 4-Jan-2022 06Z**

**SURFACE FORECAST 5-Jan-2022 18Z**

Seas (FT)



**METSIT 06Z 4-Jan** WEAK LEE-SIDE LOW PRESSURE TO SPIN UP NEAR DRYGALSKI ICE TONGUE EARLY IN THE FORECAST PERIOD AND PRODUCE INCREASED CLOUDS AND PERIODS OF LIGHT SNOW. VISIBILITY SHOULD REMAIN UNRESTRICTED WITH MILD CONDITIONS THROUGH THE END OF THE FORECAST.

**FORECASTER NOTES** THIS WILL BE THE LAST WEAX ISSUED UNLESS OTHERWISE REQUESTED. PLEASE REFER TO THE MCMURDO DAILY FORECAST. FORECAST SHIP POSITION HAS VESSEL AT APPROXIMATE ICE EDGE IN THE MCMURDO SOUND BY 05/0600Z. FORECAST CONDITIONS FROM 05/1200Z THROUGH 06/0600Z REFLECT THIS APPROXIMATE ICE EDGE POSITION.

VALID TIME	4-Jan 12Z	4-Jan 18Z	5-Jan 00Z	5-Jan 06Z	5-Jan 12Z	5-Jan 18Z	6-Jan 00Z	6-Jan 06Z
SKY CONDITION	CLOUDY	CLOUDY	MOSTLY CLOUDY	PARTLY CLOUDY	MOSTLY CLOUDY	MOSTLY CLOUDY	PARTLY CLOUDY	PARTLY CLOUDY
WEATHER	SNOW	SNOW	NONE	NONE	NONE	NONE	NONE	NONE
VISIBILITY (NM)	UNRESTRICTED	UNRESTRICTED	UNRESTRICTED	UNRESTRICTED	UNRESTRICTED	UNRESTRICTED	UNRESTRICTED	UNRESTRICTED
SFC WINDS (DIR & KTS)	SE 10-15	ESE 10-15	NW 5	NW 5	NW 10	NW 5	NW 5	VRB 5
SFC MAX/MIN (°C)	-2/-4				-2/-4			
SST RANGE (°C)	-0.5/-1.5				-0.5/-1.5			
SEAS (DIR & FT)	ENE 1-3	E 2-4	NE 1-3	N 0-2	N 0-2	N 0-2	N 0-2	N 02
ICE ACCRETION	NIL	NIL	NIL	NIL	NIL	NIL	NIL	NIL

