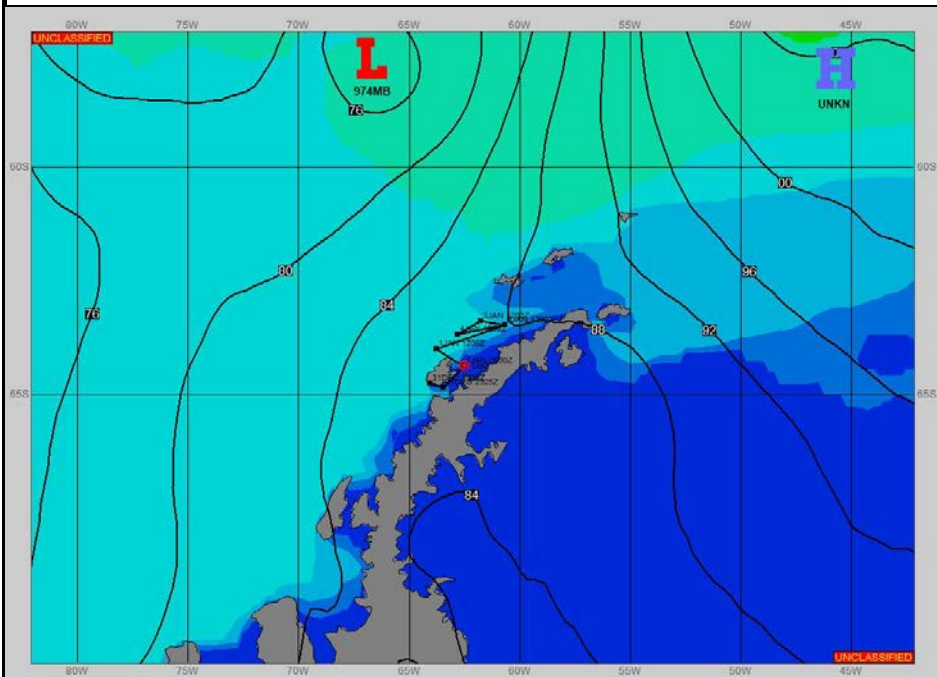


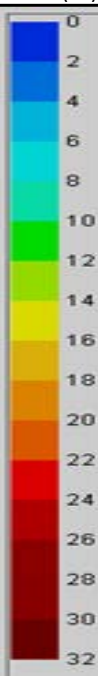
Ref A: MOVREP 31 DEC 2022 1238Z

Ref B:

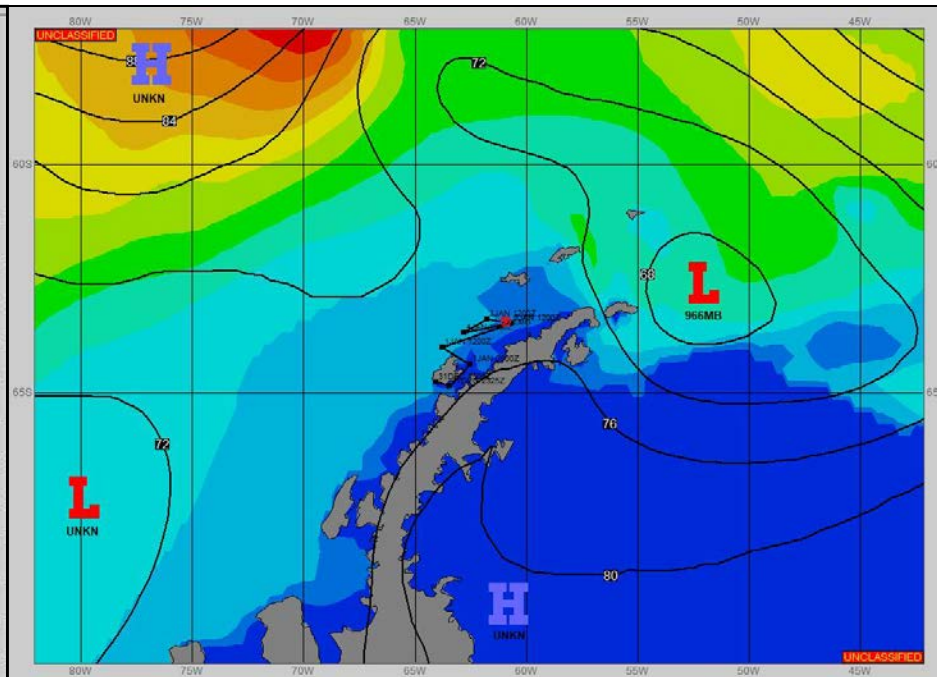
SURFACE ANALYSIS 1-Jan-2023 06Z



Seas (FT)



SURFACE FORECAST 2-Jan-2023 18Z



METSIT 06Z 1-Jan 974MB LOW NEAR 57S 066W MOVING SOUTHEAST THROUGH DRAKE'S PASSAGE AND DEEPENING. FORECAST SHIP POSITIONS MAY SEE REDUCED VISIBILITY IN RAIN SHOWERS AS THE LOW TRACKS NORTH AND EAST, BUT VISIBILITY SHOULD GENERALLY BE GOOD THROUGH THE FORECAST PERIOD UNDER EAST-SOUTH-EASTERLY FLOW. AS LOW PASSES EAST, WINDS TO CALM. EXPECT TEMPERATURES ON THE WARM SIDE OF ZERO.

FORECASTER NOTES WINDS MAY DIFFER FROM THOSE FORECAST DUE TO FUNNELING/SHELTERING EFFECTS OF ISLANDS.

VALID TIME	1-Jan 12Z	1-Jan 18Z	2-Jan 00Z	2-Jan 06Z	2-Jan 12Z	2-Jan 18Z	3-Jan 00Z	3-Jan 06Z
SKY CONDITION	CLOUDY	CLOUDY	MOSTLY CLOUDY	CLOUDY	CLOUDY	MOSTLY CLOUDY	PARTLY CLOUDY	CLOUDY
WEATHER	NONE	RAIN	RAIN	NONE	NONE	NONE	NONE	NONE
VISIBILITY (NM)	UNRESTRICTED	3 - 5	3 - 5	UNRESTRICTED	UNRESTRICTED	UNRESTRICTED	UNRESTRICTED	UNRESTRICTED
SFC WINDS (DIR & KTS)	E 20-30	SE 15-20 GUST 25	SE 10-15	SE 5-10	SE 5	VRB 5	SW 5-10	SW 5-10
SFC MAX/MIN (°C)	4/1				5/2			
SST RANGE (°C)	2/1				2 / 1			
SEAS (DIR & FT)	NW 6-8	NW 5-7	NW 3-5	W 3-5	NW 3-5	NW 1-3	NW 3-5	NW 4-6
ICE ACCRETION	NIL	NIL	NIL	NIL	NIL	NIL	NIL	NIL