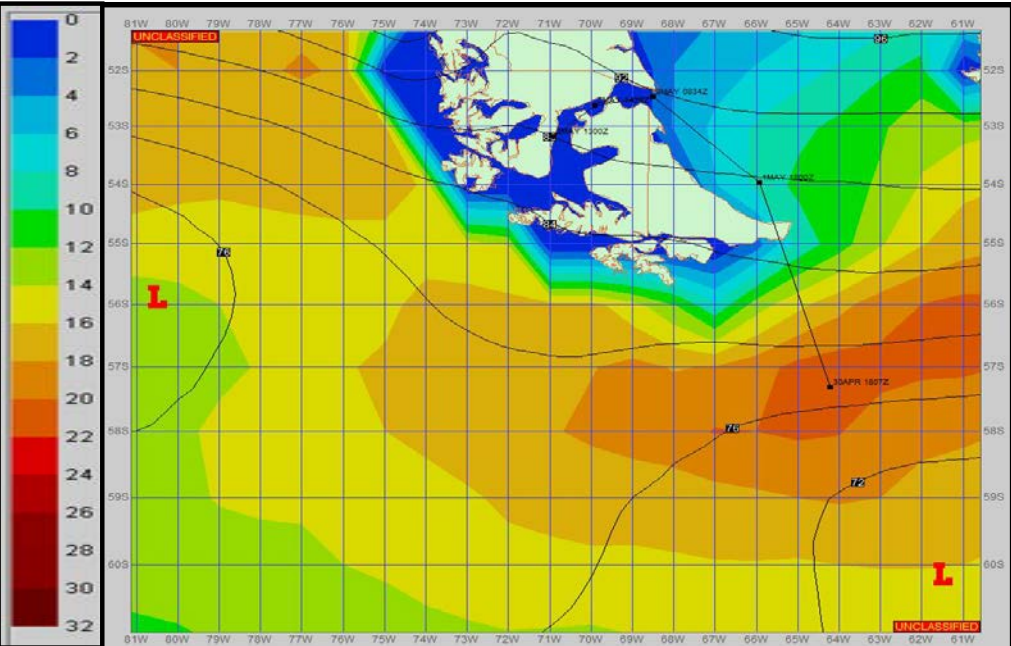
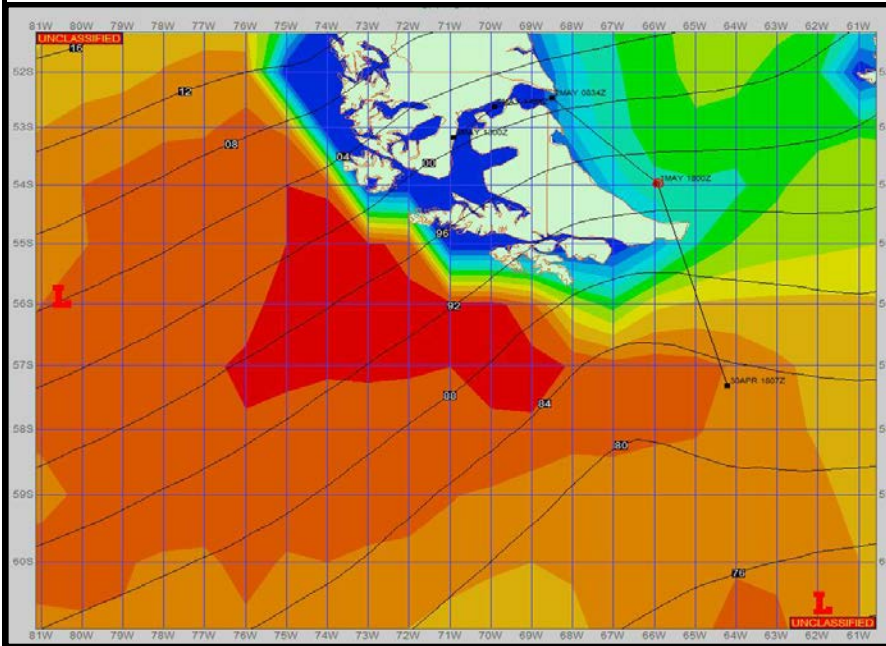


**SURFACE ANALYSIS 1-May-2023 18Z**

Seas (FT)

**SURFACE FORECAST 3-May-2023 06Z**



**METSIT 21Z 1-May** A tight pressure gradient between high pressure north, and a low pressure south keeps for strong gusty winds through the forecast period. Sea states continue to decrease as you get into the Straits of Magellan. Winds may differ from those forecast due to funneling/sheltering effects of islands. This is my final forecast unless otherwise required. Timely observations received from your ship are greatly appreciated. Outlook for arrival at PUNTA ARENAS: Winds becoming strong; considerable cloudiness with a little rain in the afternoon; winds will be locally damaging.

**FORECASTER NOTES** MCMURDO STATION WINTER OPERATIONS ARE IN EFFECT. WEAX SUPPORT WILL BE DONE BY THE MCMURDO STATION WEATHER OFFICE AND ISSUED BY 2100Z. SEE CONTACT INFO BELOW.

VALID TIME	1-May 21Z	2-May 06Z	2-May 12Z	2-May 18Z	3-May 00Z	3-May 06Z	3-May 12Z	3-May 18Z
SKY CONDITION	PARTLY CLOUDY	MOSTLY CLOUDY	MOSTLY CLOUDY	CLOUDY				
WEATHER	RAIN	NONE	NONE	RAIN	NONE	NONE	NONE	NONE
VISIBILITY (NM)	3 - 5	UNRESTRICTED	UNRESTRICTED	UNRESTRICTED				
SFC WINDS (DIR & KTS)	W 20-30 GUST 40	W 25-30 GUST 40	W 25-30 GUST 40	W 35-40 GUST 50				
SFC MAX/MIN (°C)	9 / 6				9 / 6			
SST RANGE (°C)	8 / 6							
SEAS (DIR & FT)	W 8-10	SW 4-6	W 0-2	SW 0-2				
ICE ACCRETION	NIL	NIL	NIL	NIL				